

Public Document Pack



**Service Director – Legal, Governance and
Commissioning**

Julie Muscroft

The Democracy Service
Civic Centre 3
High Street
Huddersfield
HD1 2TG

Tel: 01484 221000

Please ask for: Helen Kilroy

Email: helen.kilroy@kirklees.gov.uk

Friday 6 December 2019

Notice of Meeting

Dear Member

Children's Scrutiny Panel

The **Children's Scrutiny Panel** will meet in the **Council Chamber - Town Hall, Huddersfield** at **11.30 am** on **Monday 16 December 2019**.

This meeting will be webcast live and will be available to view via the Council's website.

The items which will be discussed are described in the agenda and there are reports attached which give more details.

A handwritten signature in black ink, appearing to read "Julie Muscroft".

Julie Muscroft

Service Director – Legal, Governance and Commissioning

Kirklees Council advocates openness and transparency as part of its democratic processes. Anyone wishing to record (film or audio) the public parts of the meeting should inform the Chair/Clerk of their intentions prior to the meeting.

The Children's Scrutiny Panel members are:-

Member

Councillor Andrew Marchington

(Chair)

Councillor Aafaq Butt

Councillor Paul Davies

Councillor Amanda Pinnock

Councillor Richard Smith

Councillor Paul White

Toni Bromley (Co-Optee)

Dale O'Neill (Co-Optee)

Linda Summers (Co-Optee)

Agenda

Reports or Explanatory Notes Attached

Pages

1: Membership of the Committee

To receive apologies for absence of Members who are unable to attend the meeting.

2: Minutes of the Previous Meeting

1 - 12

To approve the Minutes of the meeting of the Committee held on 11th October and 8th November 2019.

3: Interests

13 - 14

The Councillors will be asked to say if there are any items on the Agenda in which they have disclosable pecuniary interests, which would prevent them from participating in any discussion of the items or participating in any vote upon the items, or any other interests.

4: Admission of the Public

Most debates take place in public. This only changes when there is a need to consider certain issues, for instance, commercially sensitive information or details concerning an individual. You will be told at this point whether there are any items on the Agenda which are to be discussed in private.

5: Deputations/Petitions

The Committee will receive any petitions and hear any deputations from members of the public. A deputation is where up to five people can attend the meeting and make a presentation on some particular issue of concern. A member of the public can also hand in a petition at the meeting but that petition should relate to something on which the body has powers and responsibilities.

In accordance with Council Procedure Rule 10 (2), Members of the Public should provide at least 24 hours' notice of presenting a deputation.

6: Public Question Time

The meeting will hear any questions from the general public.

7: Number and Age of Children in Care

15 - 22

The Panel will consider a report giving an update on the number and age of children in care.

Contact Officer: Julie Bragg, Head of Corporate Parenting
(Children in Care and Care Leavers)

8: Children's Service Improvement Journey 2019

23 - 46

The Panel will consider a report giving an update on the Review of the Children's Services Improvement Journey during 2019.

Contact Officer: Elaine McShane, Service Director (Family Support and Child Protection)
Jo-Anne Sanders, Service Director (Learning and Early Support)
Tom Brailsford, Service Director (Resources Improvements and Partnerships)

9: Almondbury Community School

47 - 56

To provide Children's Scrutiny Panel with an update on the implementation of the Council's decision to change the age range of Almondbury Community School from the 1st September 2020.

Contact Officer: Jo-Anne Sanders, Service Director (Learning and Early Support)
Martin Wilby, Senior Strategic Manager (Education Places and Access)

10: Children's Scrutiny Panel Work Programme and agenda plan for 2019/20 57 - 72

Members of the panel will consider the work programme and agenda plan for the 2019/20 and will consider issues for inclusion.

Officer: Helen Kilroy, Principal Governance and Democratic Engagement Officer

11: Dates of future meetings

To note future meeting dates of the Panel during the 2019/20 municipal year:-

- 17th January 2020, 11am
 - 13th March 2020, 11am
 - 17th April 2020, 11am
-

This page is intentionally left blank

Contact Officer: Helen Kilroy

KIRKLEES COUNCIL

CHILDREN'S SCRUTINY PANEL

Friday 11th October 2019

Present: Councillor Andrew Marchington (Chair)
Councillor Paul Davies
Councillor Amanda Pinnock
Councillor Richard Smith
Councillor Paul White

Co-optees Dale O'Neill

In attendance: Jo-Anne Sanders, Service Director - Learning & Early Support
Martin Wilby, Acting Deputy Assistant Director, LA Statutory Duties Learning and Skills

Observers: Councillor Viv Kendrick
Councillor Carole Pattison
Councillor Bernard McGuin
Councillor Alison Munro
Mel Meggs, Director for Children's Services
Elaine McShane, Service Director - Family Support and Child Protection
Tom Brailsford, Service Director (Resources, Improvement and Partnerships)

Apologies: Toni Bromley (Co-Optee)
Linda Summers (Co-Optee)

1 Membership of the Committee

Apologies for absence were received from Toni Bromley and Linda Summers (Co-optees)

2 Minutes of the Previous Meeting

RESOLVED –

That the minutes of the meeting held on the 7th August and 23rd September 2019 be agreed.

3 Interests

No interests were declared.

4 Admission of the Public

All items were considered in public session.

Children's Scrutiny Panel - 11 October 2019

5 Deputations/Petitions

No petitions or deputations were received.

6 Public Question Time

No questions from the public were received.

7 Almondbury Community School

The Panel considered a report giving an update on Almondbury Community School following the Council's decision to change the age range of the school from 1st September 2020.

Jo-Anne Sanders advised the Panel that the youngsters who were on roll at Almondbury Community School and lived in the area were at the heart of the proposals. Jo-Anne Sanders highlighted key points which were as follows:-

- The Learning Service was working in partnership with Almondbury Community School, King Jame's School, Netherhall High School and Newsome High School to develop an offer for existing secondary age pupils at Almondbury Community School which would include carefully planned transitional arrangements;
- A letter was issued to Year 6 pupils by primary schools in the areas surrounding Almondbury on the 30th September confirming catchment areas, the letter was attached to the report as Appendix A;
- Officers were working hard to progress the transitional arrangements for children on roll at Almondbury Community school in years 7 to 10 and this was expected to be shared with parents shortly; children in the current year 11 would complete their education and then leave school;
- Kirklees applied to the Office of the School Adjudicator for a variation to the secondary school Priority Admission Areas (PAAs) of Newsome and Netherhall High Schools for 20/21; a complementary application had also been made by King Jame's Academy to the Education and Skill Funding Agency (ESFA);
- An application was made by Kirklees to reduce the Pupil Admission Numbers (PAN) in the primary phase of Almondbury Community School to 30 places for 2020/21 and a positive decision has been received from the Schools Adjudicator on the 30th September, which brought clarity to parents and carers who were applying for a Reception place to start in September 2020;
- Following an inspection by Ofsted in December 2018, Almondbury Community School was issued with an Academy Order in May this year and the Office of the School Adjudicator had advised that work would commence in due course on the academy conversion.

Jo-Anne Sanders advised the Panel that the main priority for Kirklees was to bring clarity to parents.

In response to a question from Cllr Munro regarding whether places would be guaranteed at King Jame's School, Jo-Anne Sanders advised that there was no guarantee for a school place at any school, but that children living in the King Jame's priority admission area would get priority over other children living outside the catchment area for King Jame's.

Children's Scrutiny Panel - 11 October 2019

In response to a question from Cllr Munro regarding the admission arrangements for children in year 5, Jo-Anne Sanders advised that children in the current year 5 would apply for a secondary school place next year. Jo-Anne Sanders further explained that there would be an opportunity in the autumn to consult with schools on their admission criteria and that the Learning Service would work with the schools in question on this.

In response to a question from Cllr McGuin regarding whether the published admission number for King Jame's would increase, Jo-Anne Sanders advised that the Learning Service was currently in consultation with the schools referenced in this report and that it would bring clarity regarding the number of places in year groups in due course, but that the focus was on making the transitional arrangements as smooth as possible for children and families.

In response to a question from Cllr Munro regarding children from Almondbury Community School being forced to travel to schools outside their catchment areas and siblings going to different schools, Jo-Anne Sanders advised that officers were working at pace to bring clarity to children on the school roll in cases where there would be an impact on travel and the Learning Service would liaise with those families in question.

In response to a question from the Panel regarding whether the priority admission areas were permanent, Jo-Anne Sanders advised that they were not permanent but that consultation could be undertaken in the autumn on the future admission arrangements for the schools where necessary with a view to making more permanent arrangements.

In response to a question from Cllr McGuin regarding whether a cost analysis had been undertaken on the cost of changes in school arrangements, Jo-Anne Sanders advised that the Learning Service was mindful of the fact that the Council had to make sure that the Almondbury Community School primary phase was fit for purpose and suitable and needed to make sure that the school funding arrangements followed the youngsters. Jo-Anne Sanders advised that a multi-agency team would look at all necessary issues including funding and that the Schools Forum would scrutinise this.

In response to a question from Cllr Munro regarding places available at Netherhall and Newsome High Schools, Jo-Anne Sanders advised that parents had been informed of a dedicated email address in Pupil Admissions who were communicating with parents on a one to one basis in response to their queries. Jo-Anne Sanders advised that the Learning Service was very close to being able to communicate with parents and carers to bring further clarity on this matter.

In response to a question from Cllr Munro regarding whether open evenings would be held for families to look at the various options for secondary school places for children on roll at Almondbury Community School, Jo-Anne Sanders advised that open evenings would be arranged and that officers were working as fast as they could to bring clarity and acknowledged this was a stressful time for families.

Children's Scrutiny Panel - 11 October 2019

In response to a question from Cllr McGuin regarding whether people were trying to get their children into another secondary school in-year, Jo-Anne Sanders advised that Pupil Admissions had seen some parents choose to take up the opportunity and that they had statutory rights to do so, but that places would be limited due to availability. The Panel was informed that Pupil Admissions would be happy to talk to any parents who wanted to take up this right. Jo-Anne Sanders advised that every child would be tracked in terms of ensuring that transitional arrangements were put in place.

In response to a question from the Panel regarding the success rating of the Impact Education Multi-Agency Academy Trust who would be the sponsor for Almondbury Community School, Jo-Anne Sanders advised that this had been communicated to parents and carers by the School early in October 2019. The Panel was informed that the Impact Education Multi-Agency Academy Trust had also been appointed as the sponsor for Newsome High School, which had also been served with an academy order. The Panel agreed to consider a report at a future meeting on the success rating of the Academy Trust.

The Panel agreed to attend meetings with parents regarding the transitional arrangements for children on roll at Almondbury Community School for the school year 2020/21.

RESOLVED –

1. The Panel noted the progress report on Almondbury Community School and thanked Jo-Anne Sanders and Martin Wilby for their contributions.
2. The Panel agreed to consider an update report to the November meeting outlining next steps and progress and which would include an outline of the transitional arrangements for children years 7 to 10.
3. That the Panel consider a future report on the success rating of the Academy Trust that was sponsoring Newsome High School and that the report should include an update on the Management arrangements for the school, following its Ofsted rating of special measures.
4. The Panel agreed to attend and observe meetings with parents held to discuss the transitional arrangements for children from Almondbury Community School for the school year 2020/21.

8 Children's Scrutiny Panel Work Programme and agenda plan for 2019/20

The Panel considered the work programme and agenda plan for the 2019/20 and will considered issues for inclusion.

RESOLVED -

1. That the 2019/20 Agenda Plan for the Children's Scrutiny Panel be noted and updated as agreed.
2. That the Governance Officer be authorised to liaise with officers on agreed actions.

Contact Officer: Helen Kilroy

KIRKLEES COUNCIL

CHILDREN'S SCRUTINY PANEL

Friday 8th November 2019

Present: Councillor Andrew Marchington (Chair)
Councillor Paul Davies
Councillor Amanda Pinnock
Councillor Richard Smith
Councillor Paul White

Co-optees Toni Bromley
Dale O'Neill

In attendance: Tom Brailsford
Jo-Anne Sanders
Steve Comb

Observers: Councillor Viv Kendrick
Councillor Alison Munro

Apologies: Linda Summers (Co-Optee)
Elaine McShane

1 Membership of the Committee

Apologies for absence were received from Linda Summers (Co-optee) and Elaine McShane.

2 Interests

No interests were declared.

3 Admission of the Public

All items were considered in public session.

4 Deputations/Petitions

5 Number and Age of Children in Care

The Panel considered a report giving an update on the number and age of children in care presented by Steve Comb, Head of Corporate Parenting (Sufficiency).

Steve Comb highlighted the following key points:-

- The number of looked after children in Kirklees was significantly lower than statistical neighbours;

Children's Scrutiny Panel - 8 November 2019

- There had been a further decline in September of the numbers of children living more than 20 miles outside the District;
- Information on Semi Independent Accommodation for young people aged 16 plus had been included in the report at the request of the Panel.

In response to a question from the Panel regarding young people from Kirklees living in semi-independent accommodation outside of the District and whether they returned to Kirklees, Steve Comb advised that some would return to Kirklees, or might have family living in the area and others could have previously lived in that locality in foster placements. Steve Comb further explained that these young people would have reviews and allocated Social Workers, the Leaving Care Team would also be involved and Kirklees would still act as the Corporate Parenting for those placed outside of Kirklees.

In response to a question from the Panel regarding the stability of the numbers of children less than 2 year old who were taken into care, Steve Comb advised that some placements were temporary whilst an assessment was undertaken, some returned to their family where it was safe to do so or to extended family members, alternatively plans could be put in place for adoption depending on the circumstances. Steve Comb further explained that there was a slight increase in the numbers over a recent 3 month period and that the figures would be monitored to ensure this was not a long-term trend.

In response to a question from the Panel regarding the recent increase in numbers of looked after children and whether there were any trends, Steve Comb advised that there had been an increase in recent months but that over the last few weeks the figure had remained at 640. The Panel was informed that some analysis was being undertaken to look at the specific circumstances of the children, but that children would always be taken into care if that was necessary to keep them safe.

RESOLVED -

- (1) The Panel noted the report on Number and Age of Children in Care and thanked Steve Comb for his contributions.
- (2) That officers continue to monitor the stability of the data for looked after children less than 2 years old.

6 Update on repeat referrals and second time on Care Protection plan

The Panel considered a report giving an update on repeat referrals and second time on Care Protection Plan presented by Steve Comb, Head of Corporate Parenting (Sufficiency) and Tom Brailsford, Service Director (Resources Improvements and Partnerships).

Steve Comb advised that this report was in response to a request by the Panel at the October 2019 meeting when concerns were raised in relation to the number of repeat referrals. The Panel was informed that there had been 28.6% referrals in August 2019 which had decreased to 24.2% in September 2019. Steve Comb further explained that analysis was being undertaken to review the referrals as part of quality assurance. The Panel was informed that the early help offer was being officers were strengthening and embedding the early help offer to support families.

Children's Scrutiny Panel - 8 November 2019

Steve Comb advised the Panel that Professor David Thorpe would be undertaking a piece of work in November to assess how the front door had developed and was performing, including responses to child protection enquiries and referrals.

In response to a question by the Panel regarding what initiatives were in place to support the underlying issues of repeat referrals, for example, domestic violence, Steve Comb advised that this was being addressed by the Improvement Board and was a key focus for the Kirklees Safeguarding Children's Board partnership who were working across the District to enhance services, for example, working with the police to create positive outcomes for those experiencing domestic violence and abuse.

In response to a question from the Panel regarding the origin of referrals relating to domestic violence, Steve Comb advised that academy research was being commissioned and further background regarding data could be brought to a future Panel meeting.

In response to a question from the Panel regarding the number of children in care in Kirklees and referrals compared to Kirklees' statistical neighbours, Steve Comb advised that if assessments were completed and children needed to come into care then that would happen. Steve Comb further explained that the comparative data within the report dated back to 2018 and that there had been rises in a number of areas across the country in terms of challenges for children in care.

The Panel agreed to consider further how domestic violence and abuse was affecting children and young people in Kirklees and what support and services were available.

Tom Brailsford advised the Panel that Domestic Abuse Strategies were being produced that crossed over between children and adults and that these could be shared with the Panel. Tom Brailsford further explained that the regional comparative data for re-referrals was currently static and a month by month account on how this data had changed nationally and regionally was not currently available. The Panel was informed that the work being undertaken by Dr Thorpe would look at the whole risk agenda.

In response to a question from the Panel regarding what relationship and links Kirklees had with third sector organisations to which young people could be introduced, Tom Brailsford advised that a detached youth programme had been put in place in the summer which had been very successful. The Panel was informed that Kirklees had also commissioned the Youth Alliance to do some work on healthy holidays which was about engaging with young people during the holiday period and putting on activities whilst also making sure that children and young people had the right amount of nutrition and food. The Panel noted that a report on the Healthy Holiday's Scheme would be considered by Cabinet in December 2019.

The Panel considered a report giving an overview of repeat Child Protection Plans (CPP) where a child or young person previously subject to a CPP was made subject to a second plan within two years of the previous plan ending presented by Tom Brailsford, Service Director (Resources Improvements and Partnerships).

Children's Scrutiny Panel - 8 November 2019

Tom Brailsford advised that 70 children in Kirklees had been made subject to a repeat CPP within 2 years of their previous CPP ending, but that a number of these ended after a relatively short period of time. The Panel was advised that neglect was the overriding initial risk of harm category for children being on a repeat CPP.

The Panel was advised that when comparing re-registrations for Child Protection Plans for children who have previously been subjected to a previous plan during their life time, the number of repeat CPP's in Kirklees had historically been below our statistical neighbours and the national figure. Tom Brailsford advised that the figures for Kirklees over the past 6 months had been increasingly in line with these comparators.

Tom Brailsford advised the Panel that through quality assurance activity, Children's Social Care and the Child Protection Review Unit would continue to monitor the professional response for children and families subject to CPPs. The Panel was informed that the Children's Services Quality Assurance Framework was currently under review and when complete would be shared with the Children's Scrutiny Panel for further discussion. Tom Brailsford further explained that CPPs would be monitored including the reasons for them being on a CPP.

In response to a question from the Panel in relation to the ending of a CPP and the intervention long term, Tom Brailsford advised that the Quality Assurance work being undertaken would help to identify the success of the intervention and why a CPP came to an end and then examine why a CPP started again within a 12 month period.

The Panel agreed to consider a future report outlining what support was put into place for children and young people once their Child Protection Plan had ended.

RESOLVED –

- (1) The Panel noted the report on repeat referrals and second time on Care Protection Plan and thanked Steve Comb and Tom Brailsford for their contributions.
- (2) That the Panel consider a future report giving more detail on child referrals of domestic violence/abuse, including what impact this was having on young people and information on the origins of the referrals.
- (3) That the Panel consider a report outlining the results of the research undertaken by Professor Thorpe assessing how the front door has developed and is performing including responses to child protection enquiries and referrals.
- (4) That the Panel consider a future update outlining what support is put into place for children and young people once their Child Protection Plan finishes.

7 Early Support Partnership

The Panel considered a report giving an update on the Early Support Partnership presented by Michelle Wheatcroft, Head of Service (Early Support) and Jo-Anne Sanders, Service Director (Learning and Early Support).

Children's Scrutiny Panel - 8 November 2019

Michelle Wheatcroft highlighted the key areas from the report, as follows:-

- The Early Support Service was established in April 2018;
- Family Support were currently supporting 670 children (as at 16.10.19) as early support status which did not include cases supported that were open to social care;
- The area with the highest number of referrals to Early Support was Dewsbury and Mirfield at 108 (average of 18 per month) followed by Spen and Cleckheaton second highest with 111 (average 11 per month);
- The service received an average of 90 referrals per month with highest number received from schools closely followed by Children's Social Care;
- The Parenting Team had started some improvements to the parenting offer and were allocating members of the team to each community hub area to build relationships with schools and other professionals;
- The Parenting Team would be exploring the running of sessions during each school holiday to bring families together in the learning environment and would capture impact on the children of parents attending the programmes;
- Family Group Conferences had been introduced and were voluntary decision making meetings to help families find their own solutions to problems;
- All therapists in Multi-Systemic Therapy (MST) were above target for adherence to the MST model, as reported by all parents;
- The MST Service would expand to develop 2 additional teams, one to focus on young people at the risk of exploitation and one to develop services for children with a plan to return home from the looked after services;
- Kirklees MST made a successful bid to the national Youth Endowment Fund (YEF) which meant more investment would be made in protecting children who were at risk;
- The Mental Health in Families Team (MHF) coordinated appropriate early support for parents who had mental health difficulties and shared information relevant to the welfare of their children;
- There were now 17 Community Hubs across Kirklees with a defined partnership of schools bringing together Early Years, Primary and Secondary partnerships;
- A Youth Summit was held in May 2019 with 150 attendees, the Children's Commissioner for England and the West Yorkshire Police Crime Commissioner attended as key note speakers;
- A detached Youth Offer had been implemented over the summer holidays and would continue to the end of the year; a permanent Youth offer had been developed and integrated into the Early Support Service.

In response to a question regarding what problems were being addressed by the introduction of the Early Support Service, Michelle Wheatcroft advised that data reporting and analysis was being worked up and this would be shared with the Panel in the future for consideration.

The Panel agreed to consider a report at a future meeting explaining how the intervention work being carried out could have an impact in reducing the risks of tensions within families and how this might impact in terms of repeat referrals, children coming into care and child protection plans.

Children's Scrutiny Panel - 8 November 2019

In response to a question from the Panel relating to how the impact for better outcomes could be measured to reduce the number of children going into care and whether schools were aware and helping, Michelle Wheatcroft advised that schools were on board with the Early Support offer and that the link to schools was through the community hubs. Jo-Anne Sanders advised the Panel that there was a huge commitment from schools to contribute towards keeping children safe.

In response to a question regarding the Youth Offer and Children's Centres and what was available, Michelle Wheatcroft advised that the detached Youth Offer would be in place until the end of 2019. The Panel was advised that funding was committed until the end of December and that a Programme Board was considering 5 work streams for the Youth Offer and that there was a commitment from the Local Authority to provide funding. Michelle Wheatcroft further explained that with regard to the Children's Centre Offer a session with partners (health and voluntary sector) would be held towards the end of January to produce this. The Panel was informed that a link would be made to what was already available in the Community Hubs and need within communities would be mapped out.

In response to a question from the Panel regarding the reasons for the unsuccessful Family Group Conferences (FGC), Michelle Wheatcroft advised that sometimes families did not engage or the FGC did not take place, but agreed to provide further information on this for the Panel.

RESOLVED –

- (1) The Panel noted the report on the Early Support Partnership and thanked Michelle Wheatcroft and Jo-Anne Sanders for their contributions.
- (2) That the Panel consider data and analysis on the key areas of the Early Support approach when it was available.
- (3) That the Panel consider information at a future meeting regarding how the intervention work being carried out could have an impact in reducing the risks of tensions within families and how this might impact in terms of repeat referrals, children coming into care and child protection plans.
- (4) That the Panel consider information giving further detail on the outcomes of all referrals to Family Group Conferencing or the reasons why these may not have been successful.

8 Almondbury Community School Update

The Panel considered a verbal update on Almondbury Community School and the transitional arrangements for school places from September 2020 presented by Jo-Anne Sanders, Service Director (Learning and Early Support).

Jo-Anne Sanders highlighted the following key areas:-

- A letter was recently sent to all affected families in year groups 7-10 and the current year 11 families to provide clarity;
- Kirklees had worked with the local school partnership to ensure good transitions for those pupils affected by the proposals and gave parents the opportunity to express a school preference;
- An event was held on 24th October 2019 at Almondbury Community School and representatives from King James, Netherhall and Newsome High Schools attended so that they could explain their curriculum offer and other school

Children's Scrutiny Panel - 8 November 2019

arrangements about their Schools; representatives from the Council's own Admissions Team were also on hand to give advice, for example siblings in school;

- Parents were asked to return their preference forms by the 8th November 2019 and officers were working closely with all affected families to ensure all the forms were returned, on receipt of this information detailed planning could begin around transition.

The Chair of the Panel, Councillor Andrew Marchington, advised that he had attended the Parents Evening at Almondbury Community School on the 24th October 2019 and that a lot of concerns raised by parents had been addressed. Cllr Marchington had found it useful to talk to parents and teachers at the event. The Panel agreed that it would be useful for them to be invited to other future events arranged for the families affected by the proposals at Almondbury Community School.

In response to a question from the Panel regarding families whose children might have to take more than 2 bus rides to their preferred school, Jo-Anne Sanders advised that as Kirklees had asked parents to express a preference for schools which were within a reasonable distance, this would hopefully solve a lot of issues and allay anxieties for families. Jo-Anne Sanders further explained that it was not sustainable for the Council to provide a school bus service, but that officers would work with families to endeavour to resolve any concerns. The Panel was informed that in some cases there might be an opportunity to apply the home to school transport policy.

In response to a concern raised by the Panel relating to parents whose first choice of school might not be in their catchment area or within a reasonable distance, Jo-Anne Sanders advised that parents had not been told they had to send their children to certain schools, but had been given the opportunity to make a preference for a school within a reasonable distance.

RESOLVED –

- (1) The Panel noted the progress report on Almondbury Community School and thanked Jo-Anne Sanders for her contributions.
- (2) The Panel agreed to continue to attend future meetings with parents regarding the transition arrangements for children from Almondbury Community School for the school year 2020/21.
- (3) That the Panel consider future updates on the transition arrangements for children from Almondbury Community School for the school year 2020/21 – date to be confirmed.

9 Children's Scrutiny Panel Work Programme and agenda plan for 2019/20

The Panel considered the work programme and agenda plan for 2019/20 and considered issues for inclusion.

The Panel agreed that as part of their scrutiny role they would look at how affective partnerships were working for services and support available for children and young people. Councillor Marchington advised that the Panel had been invited to attend a

Children's Scrutiny Panel - 8 November 2019

Multi-Agency Meeting in Children's Services and a visit to Locala's Single Point of Access at Northorpe Hall.

RESOLVED -

- (1) That the 2019/20 Agenda Plan and Work Programme for the Children's Scrutiny Panel be noted and updated as agreed.
- (2) That the Governance Officer be authorised to liaise with officers on agreed actions.

KIRKLEES COUNCIL			
COUNCIL/CABINET/COMMITTEE MEETINGS ETC			
DECLARATION OF INTERESTS			
Childrens Scrutiny Panel			
Name of Councillor			
Item in which you have an interest	Type of interest (eg a disclosable pecuniary interest or an "Other Interest")	Does the nature of the interest require you to withdraw from the meeting while the item in which you have an interest is under consideration? [Y/N]	Brief description of your interest

Signed: Dated:

NOTES

Disclosable Pecuniary Interests

If you have any of the following pecuniary interests, they are your disclosable pecuniary interests under the new national rules. Any reference to spouse or civil partner includes any person with whom you are living as husband or wife, or as if they were your civil partner.

Any employment, office, trade, profession or vocation carried on for profit or gain, which you, or your spouse or civil partner, undertakes.

Any payment or provision of any other financial benefit (other than from your council or authority) made or provided within the relevant period in respect of any expenses incurred by you in carrying out duties as a member, or towards your election expenses.

Any contract which is made between you, or your spouse or your civil partner (or a body in which you, or your spouse or your civil partner, has a beneficial interest) and your council or authority -

- under which goods or services are to be provided or works are to be executed; and
- which has not been fully discharged.

Any beneficial interest in land which you, or your spouse or your civil partner, have and which is within the area of your council or authority.

Any licence (alone or jointly with others) which you, or your spouse or your civil partner, holds to occupy land in the area of your council or authority for a month or longer.

Any tenancy where (to your knowledge) - the landlord is your council or authority; and the tenant is a body in which you, or your spouse or your civil partner, has a beneficial interest.

Any beneficial interest which you, or your spouse or your civil partner has in securities of a body where -

- (a) that body (to your knowledge) has a place of business or land in the area of your council or authority; and
- (b) either -

the total nominal value of the securities exceeds £25,000 or one hundredth of the total issued share capital of that body; or

if the share capital of that body is of more than one class, the total nominal value of the shares of any one class in which you, or your spouse or your civil partner, has a beneficial interest exceeds one hundredth of the total issued share capital of that class.

Name of meeting: Childrens Scrutiny Panel
Date: 16th December 2019
Title of report: Number and Age of Children in Care

Purpose of report

To provide information to Childrens Scrutiny Committee on a regular basis relating to the number and profile of children in our care. Including information related to the number placed outside of the District.

Key Decision - Is it likely to result in spending or saving £250k or more, or to have a significant effect on two or more electoral wards?	NA
Key Decision - Is it in the Council's Forward Plan (key decisions and private reports?)	NA
The Decision - Is it eligible for call in by Scrutiny?	NA
Date signed off by <u>Strategic Director</u> & name	Elaine McShane for Mel Meggs (3.12.19)
Is it also signed off by the Service Director for Finance IT and Transactional Services?	NA
Is it also signed off by the Service Director for Legal Governance and Commissioning Support?	NA
Cabinet member portfolio	Cllr V Kendrick Childrens Portfolio

Electoral wards affected: All

Ward councillors consulted: No

Public or private: Public

(Have you considered GDPR?)

Yes GDPR has been considered. The information in this report does not identify any individuals.

1. Summary

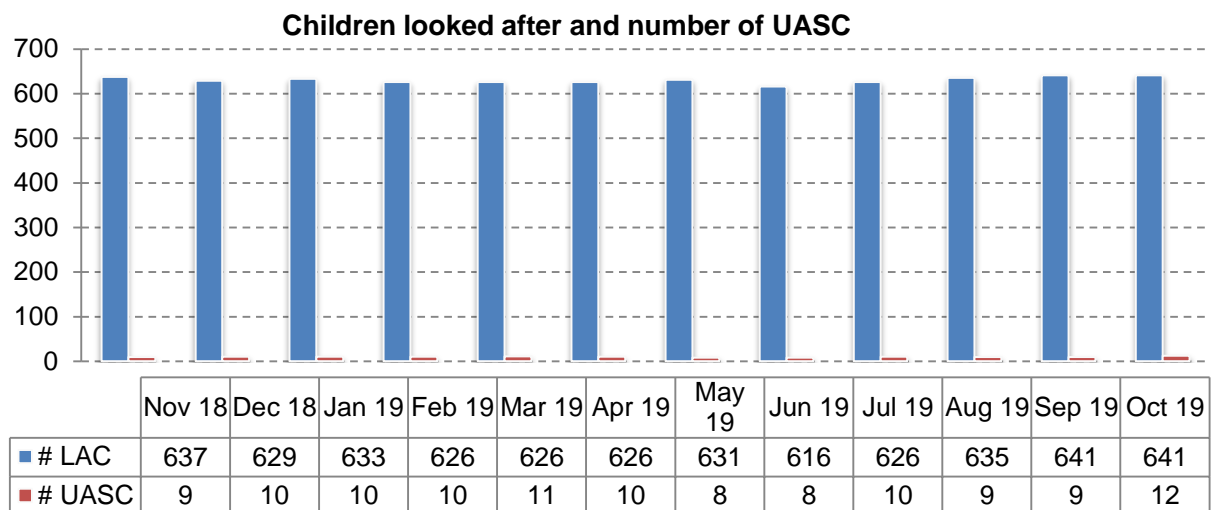
This graph shows the number of children in care 641 (excluding any looked after children receiving only S20 short term breaks) alongside the number of unaccompanied asylum seeking children (UASC).

The current number of LAC equates to a rate per 10,000 population aged 0-17 of 64.0. This compares to a statistical neighbour average of 86.1 and a national average of 64.0 based on published data for March 2018.

Kirklees (Oct 19) = 64.0

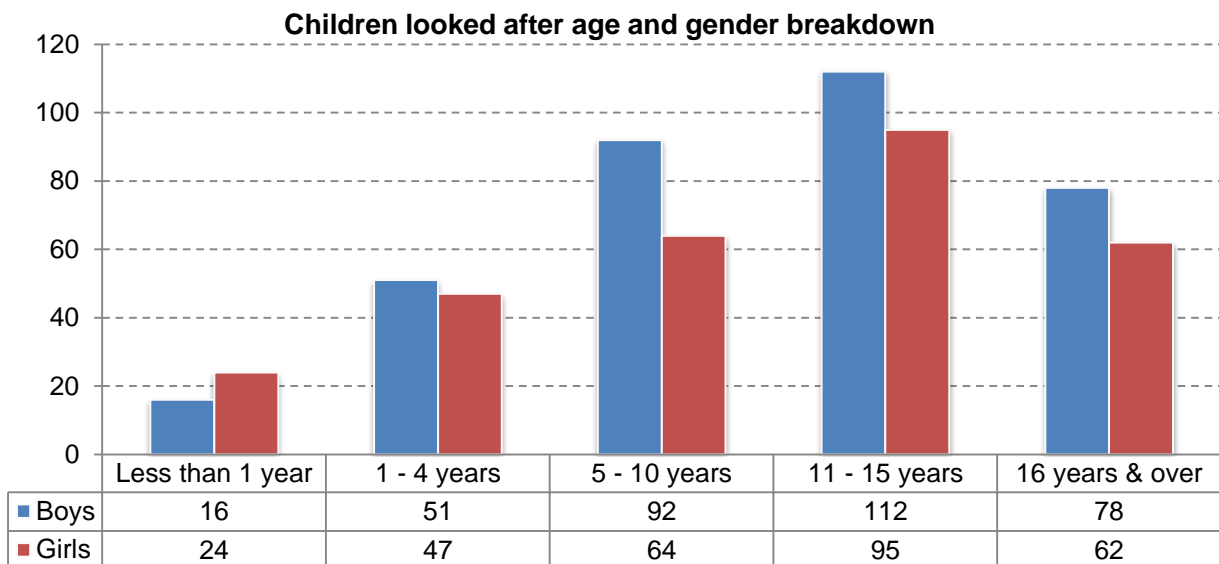
Statistical Neighbours (2018) = 86.1

England (2018) = 64.0



This graph shows the breakdown by age and gender of the children in care.

The largest age group for boys is 11 - 15 years with 112 children and the largest age group for girls is 11 - 15 years with 95 children.

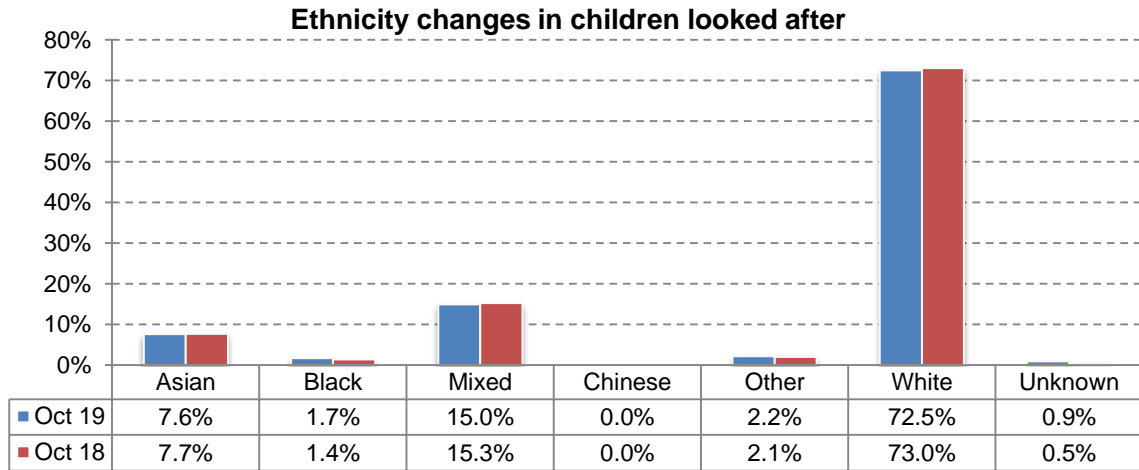


Statistical Neighbours

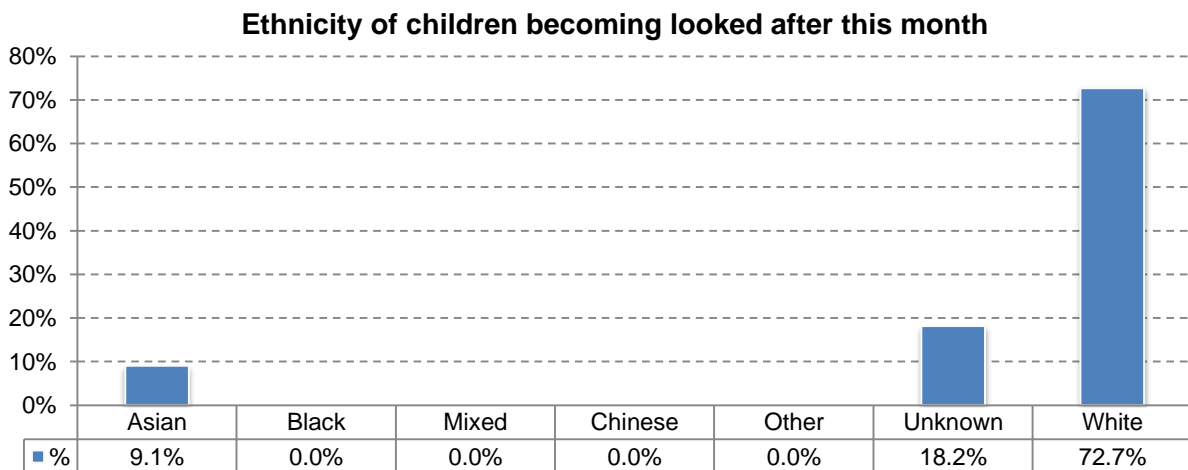
Local Authorities that the Department for Education regard as similar and close socio economically to Kirklees, not measured by population size.

Local Authorities "Very Close"* to Kirklees (* Source LAIT)
Kirklees Council
Rochdale Borough Council
Bolton Council
Calderdale Council
Bury Borough Council
Dudley MBC
Derby City
Lancashire Council
Stockton-on Tees Borough Council
Leeds City Council
Telford & Wrekin Council

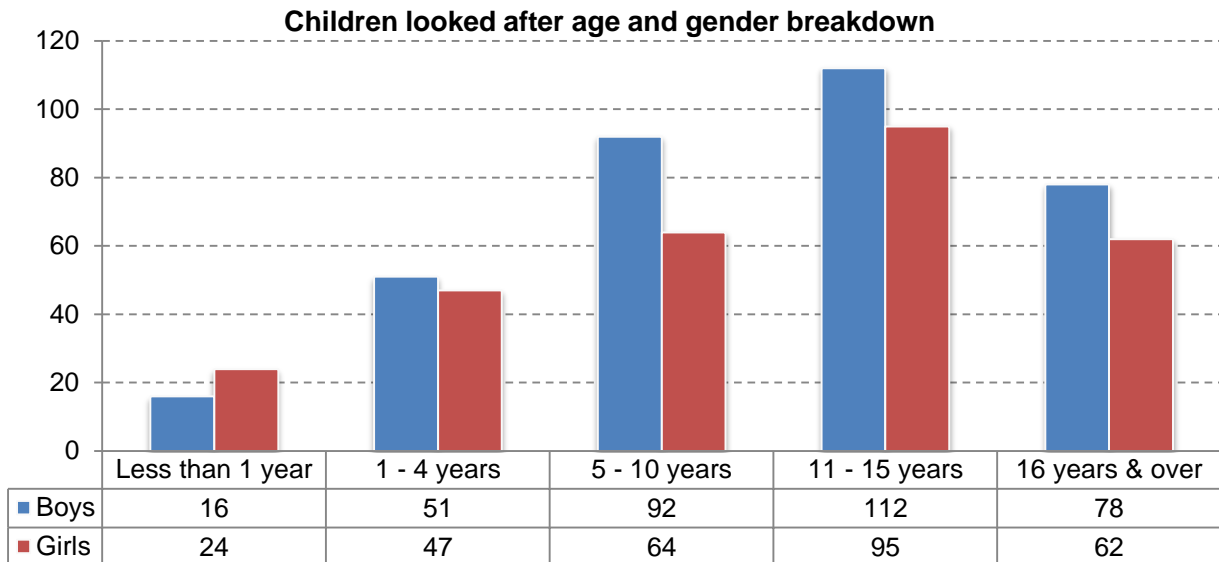
This graph shows the ethnic breakdown of the children looked after population at the end of October 2019 and the same point 12 months ago. This has been relatively stable throughout the period.



This graph shows the percentage breakdown by ethnicity of children entering care this month. Note that this outcome is based on small numbers. In October 2019 there were 11 young people who were recorded as entering care at the point of data extraction in the month of whom 8 were White, 1 was of Asian ethnicity and 2 did not yet have an ethnicity recorded.



This graph shows the breakdown by age and gender of the children in care. The largest age group for boys is 11 - 15 years with 112 (116) children and the largest age group for girls is 11 - 15 years with 95 (96) children.



Children and Young People placed more than 20 miles outside of Kirklees

The number of looked after children placed outside Kirklees District 20 plus miles from their home address was 81 on 31st October 2019. This follows a continuum of decline from a number of 127 in 2017, and a reduction of 20 over the last six months. The majority of our children and young people placed out of area are placed in foster care, the remainder are placed in children's homes, semi-independent homes, a small number in youth custody or other specialist settings.

Current Number of Children and Young People placed more than 20 miles is 81 this equates to 12.6% of cohort, recent historical position is detailed below

	31 Mar 2019		30 Apr 2019		31 May 2019		30 Jun 2019		30 Sept 2019	
	Number	%	Number	%	Number	%	Number	%	Number	%
Placed outside Kirklees & over 20 miles from home address	105	16.8%	101	16.1%	103	16.3%	89	14.4%	78	12.2%

Semi Independent Accommodation aged 16 plus

On 30th September there were forty three young people currently accommodated in semi-independent accommodation, thirty within District and thirteen of our young people are placed outside of the Kirklees District details below.

Placements outside of Kirklees in semi-independent living accommodation (not subject to Children's Home regulations)			
As at 30/09/2019			
LA of Placement	Aged 16	Aged 17	Total
Calderdale Metropolitan Borough Council		1	1
City of Bradford Metropolitan District Council	1	3	4
Devon County Council		1	1
Leeds City Council		7	7
Total	1	12	13
Legal Status	Aged 16	Aged 17	Total
Full Care Order	1	8	9
S20 CA 1989 - Single Placement		4	4
Total	1	12	13

2. **Information required to take a decision**

No decision is required, this report is submitted at the request of children's scrutiny to monitor the number of children in care.

3. **Implications for the Council**

3.1 **Working with People** Not applicable

3.2 **Working with Partners** Not applicable

3.3 **Place Based Working** Not applicable

3.4 **Improving Outcomes for Children**

This information is provided at the request of Corporate Parenting Board to monitor the number of children in care their age and location of placements.

3.5 **Reducing demand of services**

Not applicable

4. **Consultees and their opinions**

Not applicable

5. **Next steps**

A similar report will be presented at a future Childrens Scrutiny.

6. **Officer recommendations and reasons**

That the report be noted.

7. **Cabinet portfolio holder's recommendations**

Not applicable

8. **Contact officer**

Julie Bragg Corporate Parenting

9. **Background Papers and History of Decisions**

Previous reports to the Childrens Scrutiny on number and age of children in care.

10. **Service Director responsible**

Elaine McShane, Service Director (Child Protection and Family Support)

This page is intentionally left blank

Kirklees OFSTED Annual Conversation

Autumn 2019 Self-evaluation

We're Kirklees – an outstanding place for children and families to thrive.

This document will provide a brief overview of current performance and improvement activity in Kirklees to help facilitate the Annual Conversation with Ofsted. Our self-assessment evaluates our performance and articulates what we believe is working well for children in Kirklees as well as areas for improvement. It will cover the following:

1. About Kirklees (Pages 1 -3)
2. Key developments in Kirklees in the past year (Pages 3- 6)
3. Improvement Priorities (Page 7)
- 3.a Improvement priorities for Children's Social Care and Early Support (Pages 7 – 11)
- 3.b Improvement priorities for children and young people with Special Educational Needs and Disabilities (Pages 12 – 14)
- 3.c Improvement priorities for Education and Learning (Pages 14 – 20)

1. About Kirklees

Kirklees is a large and diverse borough, 440,000 people live across our towns and villages.

Kirklees has vibrant, young and dynamic communities; nearly a quarter of our population – 104,000 are under 18.

Covering 157 square miles, Kirklees has three distinct areas:

North Kirklees covering Dewsbury, (Kirklees' second largest town) the urban centres of Mirfield, Batley, Cleckheaton and the more rural Spenn Valley

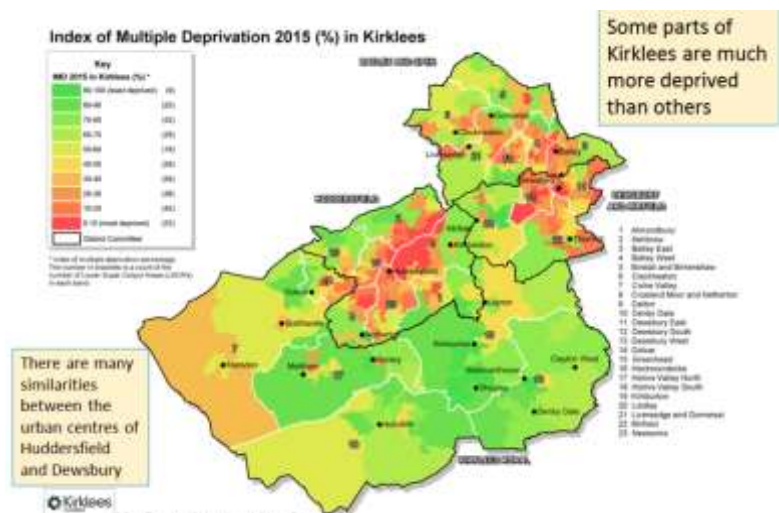
Huddersfield -the largest town in Kirklees and the business, administrative and retail centre of Kirklees

South Kirklees – consisting of rural and semi-rural communities which extend into the Pennine moor land.

Kirklees has a varied and diverse population. Across the borough different demographic and socioeconomic groups can experience significant differences and inequalities in outcomes.

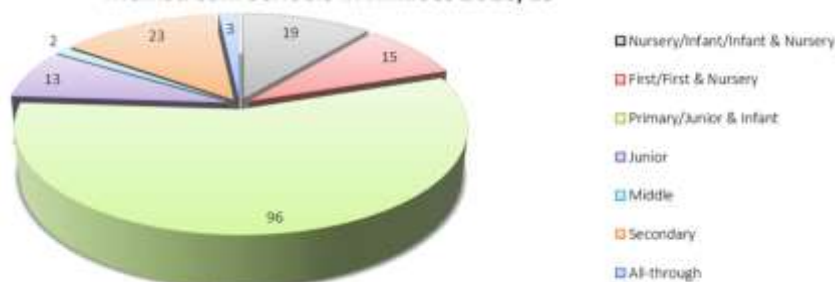
1 in 5 of the school population is entitled to free school meals, and English is an additional language for 3 in 10 primary school starters. 1 in 5 of the total population and 1 in 3 babies born to Kirklees mums is from a BME community.

Some areas of Kirklees are much more deprived than others, we understand the potential impact poverty can have on children and families.



Our Schools

Mainstream Schools in Kirklees 2018/19



	Number of Pupils including Academy & CTC (Jan 2019)	Number of Schools including Academy & CTC (Jan 2019)
PRIMARY (State-Funded)	39,507	142
SECONDARY (State-Funded)	27,335	28
SPECIAL (State-Funded)	763	6
PRU	41	3
TOTAL	67,646	179

Ofsted Judgements

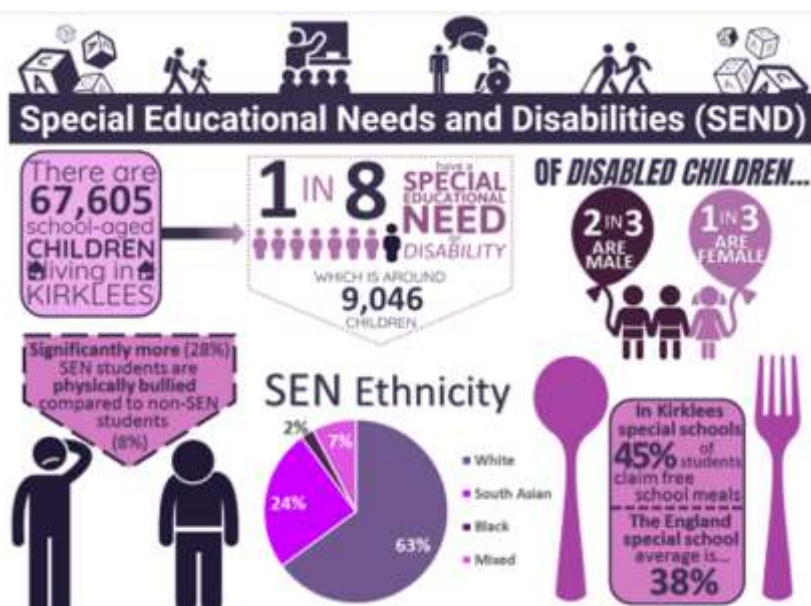
Ofsted Judgements	Breakdown of Ofsted Inspections 2018/19	
	No of Schools	% of Schools
Remained Good	21	51.2%
Remained Outstanding	3	7.3%
Good to Outstanding	1	2.4%
RI to Good	4	9.8%
First Inspection - Good	3	7.3%
First Inspection - RI	3	7.3%
Outstanding to RI	1	2.4%
RI to Inadequate	3	7.3%
Good to Inadequate	1	2.4%
Remained Inadequate	1	2.4%
	41	100%

Proportion of Academies to Maintained Schools

Primary	19.7%
Secondary	65.2%
Middle	100.0%
Special	33.3%
PRU	100.0%

% of primary schools judged good or better	81.2%
% of secondary schools judged good or better	71.4%

Our SEND profile



Children in Need

Indicator	Type of measure	Month End			*Benchmarking	
		Jul 19	Aug 19	Sep 19	SN	Eng
Number of Children in Need	Number (per 10,000 aged 0-17 in brackets)	2640 (263.5)	2679 (267.4)	2553 (254.8)	394.1	334.2
	Direction of Travel	↑	↑	↓		

Looked After Children

Key Indicators

Indicator	Type of measure	Month End			*Benchmarking	
		Jul 19	Aug 19	Sep 19	SN	Eng
Number of Looked After Children	Number (per 10,000 aged 0-17 in brackets)	626 (62.7)	635 (63.6)	641 (64.2)	86.1	64.0
	Direction of Travel	↑	↑	↑		

Child Protection

Key Indicators

Indicator	Type of measure	Month End			*Benchmarking	
		Jul 19	Aug 19	Sep 19	SN	Eng
Children with a Child Protection Plan	Number (per 10,000 aged 0-17 in brackets)	393 (39.4)	422 (42.3)	400 (40.1)	52.1 (per 10,000 aged 0-17)	45.3 (per 10,000 aged 0-17)
	Direction of Travel	↑	↑	↓		

2. Key developments in the past year Kirklees

At the last Annual Conversation, Kirklees outlined its strategy for continuing to develop its improvement journey. The focus of our approach is “to create the ‘conditions for success’ that are the foundation for good practice and better outcomes.” The investment in Children’s Services that Kirklees committed then has continued and remains a cross-party priority for the next period. An LGA Corporate Peer Challenge noted “The Council has and continues to respond positively to the recommendations of the Children’s Services inspection. The process of recovery created an environment of cross departmental working which has reaped benefits for the organisation.”

At the heart of improvement work is a focus on knowing ourselves and our services. The questions we ask is what is the data telling us and is aligned to developing and embracing feedback loops and channels from staff, research, the voice of the child and our partners. This forms our improvement framework.

An experienced and capable leadership team has delivered clear improvements in practice and outcomes over the last year recognised in the ILACS inspection in June 2019. Kirklees is no longer “Inadequate” but “Requires Improvement to be Good.” As an authority we have expressed our ambition and desire to achieve “outstanding” services for children and families by the time of the next full inspection.

The aspiration to ensure that our safeguarding system is rebalanced with improved practice and decision-making has been maintained along with stronger services to support this. Innovation through MST teams and Mental Health in Families has continued and is combined with a focus on delivering mainstream services well and effectively.

The number of external social care residential placements outside Kirklees continues to be reduced. External residential placements now are under 30 (29 - Sept’ 2019) and are projected to be below 20 by April 2021. Placements are continually reviewed and this strategy, which remains child-focused, means that young people can return and settle in their local communities more effectively. The reduction in these residential placements has also contributed to a significant financial saving for the Authority which will be invested more effectively in other local provision.

Our approach to improvement and raising standards remains data driven, evidentially based aligned with a quality assurance framework that’s supports us to have conversations and engagement with staff and partners to improve outcomes. For example, the Ofsted report highlighted the progress our Front Door but we believe further improvements can we made and therefore we are inviting back Professor David Thorpe to work with us to continue our improvement journey particular with partners.

The appointment of the Director of Children’s Services demonstrates the successful transition of a service which was operating with a Children’s Commissioner, formal support from Leeds City Council and *DfE* oversight to an organisation with a strong sense of its own identity and ambition. Whilst retaining a *voluntary* partnership with Leeds, Kirklees has developed its own priorities and vision based on a Restorative Practice model developed with nationally leading external support and strong engagement with staff teams. We have decided to keep an improvement board structure in place Chaired by the DCS from Leeds, the board will offer support and challenge to all areas of improvement.

Supporting the DCS is a strong and confident leadership team which has provided stability and drive in past year. This has been further consolidated with the creation of a new service directory of *Resources, Improvement and Partnership* to ensure there is sufficient capacity to sustain and improve support to frontline services. This service area will focus on quality assurance and enhancing data quality along with developing a broader approach to sufficiency in relation to a wider range of placement options and educational provision.

These developments have helped to maintain the stability within the workforce which has been reinforced with a strong learning and development programme focusing on developing confident and enthusiastic practitioners again highlighted by the Ofsted inspection. The fall in agency social workers has been maintained and our ambition is to reduce this to zero by April 2020.

Kirklees has received notification from the *DfE* that they will revoke the Statutory Direction and replacing it with the lighter touch Improvement Notice. This notice will remain until the agreed second test, ‘to demonstrate that the improvement can be sustained’ is achieved. Whilst these discussions are to be concluded our direction of travel is clear. Kirklees will sustain the current improvement board arrangements, development and implement robust improvement plans to incorporate the Ofsted

feedback and provide evidence to demonstrate that the Council can sustain the improvements achieved.

A range of measures will be utilised to assess the likelihood of sustained improvements with a clearly defined datasets to measure progress;

1. Well-functioning Corporate Services
2. Stable Leadership
3. Continued Improvement in the Quality and Effectiveness of Practice
4. Strong and Supportive Partnerships
5. A Compelling Strategy for the Workforce
6. Effective Performance Information and Quality Assurance

The ILACS inspection took place in June 2019. The final report recorded “Progress has been achieved through increased corporate commitment and investment in services, clear and focused leadership, strengthening of partnerships, for example the duty and advice team, and improved workforce stability and engagement. Children who need help and protection are now recognised, and risk of significant harm is quickly responded to.” Kirklees provided feedback in response to Ofsted and continues to drive forward improvements across children’s social care.

The Annual Early Support and Social Care improvement plan has been developed using Ofsted’s and our own assessments of areas for improvement including learning from Audits. It continues to see both investment and innovation across services and responding to the emerging challenges such as gangs and knife crime that Kirklees and other local authorities face. As the Ofsted report has highlighted “The work of the multi-agency risk and vulnerability team is starting to embed, and the response to exploitation is better coordinated. There has been demonstrable success in diverting young people away from crime, including working with those involved in gangs and knife crime. The response to child sexual exploitation is well coordinated to mitigate risk. As a result, the circumstances of many of these children are improving.” Our children’s homes have all been rated either good or outstanding.

For children with special educational needs and disabilities there is an ambition for change across partners, demonstrated through the visibility of SEND in key strategic documents as well as in processes and our actions. Kirklees and its partners are also open to external scrutiny and challenge to help inform your ambitions. The Partnership seeks to develop best practice and improve outcomes by activity participation in local and regional networks and Peer review feedback. The partnership has developed its own improvement plan

Strategic leaders (Council and CCGs) in co-production with parents and carers have developed a shared vision for working with CYP and their families (including those with SEND), which incorporates the principles of a child and family centred approach. There is parent carer representation, alongside senior officers from health, education, social care, commissioning and the voluntary sector, on the Children’s SEND Strategy Group and the Integrated Commissioning Group.

Leaders have an increasingly clear understanding of our population in Kirklees:

- Its strengths and development areas
- The profile of our SEND population in Kirklees in order to plan for provision accordingly
- The strengths and areas for development of service delivery and have ensured that resources are available to support the implementation of the plans

Integrated Commissioning arrangements within Kirklees work well and working is developed at both a senior and operational level. “Thriving Kirklees” is recognised externally as a significant and ambitious development, facilitating a more integrated approach to the SEND agenda.

All partners recognise there is much more work to be undertaken. Consistency and improvement outcomes remain priorities and these priorities are captured in the improvement plan.

In relation to our Learning Strategy, working collaboratively with our schools and settings, our focus has been to lay the basis for sustainable improvement in key areas where performance is below expectations. As part of this there is a focus on good attendance and reducing exclusions.

Our Adult and Community Learning service has been inspected in September 2019 and was adjudged “Good” across the board. The published report noted “Leaders and managers work successfully with local stakeholders and subcontractors to plan programmes that make effective use of the community learning fund to promote social inclusion. The adult and community learning service successfully meet the council’s goal of raising aspirations through lifelong learning.”

Leaders and managers work successfully with local stakeholders and subcontractors to plan programmes that make effective use of the community learning fund to promote social inclusion. The adult and community learning service successfully meet the council’s goal of raising aspirations through lifelong learning.

Kirklees recognises that many of the issues and challenges that our young people face demand effective partnership working. Our Children and Young People’s plan has been refreshed through a re-energised partnership approach which has seen the emerging priorities of a new youth offer, LGBT+ and inclusion and tackling child poverty.

We have organised major initiatives engaging partners including the Early Support launch and a well-attended Youth Summit for the partnership. The latter event has been a significant impetus for our work in this area. Our development of partnership working reflects the Local Authority’s approach of *Partnership, People and Place*. Our plans for Youth Zones underpin and support our Youth Offer and developing model of practice. This work has included the University, police and key voluntary sector and community groups.

Kirklees has also implemented Operation Encompass to share relevant information with schools when one of their students has been present during an incident of domestic abuse, allowing staff to offer appropriate support during the school day. We expanded this further in Spring 2019 onwards to include children in early years settings and childminders in order to widen the support to children living in households where domestic abuse is apparent.

We are ambitious for new approaches and innovation that will deliver improved outcomes. We recognise that many of the challenges we face require a different approach. Our innovation is to be research and evidentially based and adapt best practice to a Kirklees context and environment. We are expanding our MST offer to address Family Integrated Transitions (FIT) and “Gangs” because we believe this can help to break the challenging cycles that some young people and families face.

We are aware that the development of Relationships, Sex and Health Education (RSHE) curriculum could be challenging in the Kirklees context. Given this, in order to develop the strong community relationships and ensure all our children are educated to keep themselves safe, the local authority is leading a strategy across Kirklees. Initially, to ensure no child or family is isolated, a package of support and materials and advice has been communicated to schools regularly since April.

Furthermore, a governance group with key stakeholders including the police, community and faith groups, elected members, education and public health led by the Director of Children's Services has met and will steer work over the coming months. The commitment to dialogue is strong. Alongside this, a group of schools meets to develop resources, best practice in engaging parents and advises the governance group.

We remain committed to improvement across all Children's Services. The detailed summaries of our priorities provided within this self-assessment show we have identified what we need to do to improve. We will continue to use a test and challenge approach through Peer reviews and with partners to drive sustained improvement.

We recognised in our last conversation that there is still more work to be done to deliver the standards we want for children in Kirklees and this remains the case. We believe we are putting in place the necessary steps to sustain and continue our improvement journey. Achieving both consistency across services remains a priority as well as balancing the pace of change with embedding and consolidating better practice. We continue to review and monitor all aspects of our assessment work for both quality and timeliness which remain an issue. All areas highlighted by Ofsted inspection are being addressed along with other priorities areas we have identified. We also recognise there is inconsistency and variation across educational outcomes in benchmarked results and outcomes, together with our family of schools and settings there is a high level of ambition to deliver improvements identified in our Learning Strategy.

3. Improvement Activity

The Kirklees Improvement Framework utilises a range of intelligence including outcomes of inspections and peer reviews to inform our improvement plans for Early Help and Social Care, SEND and Learning collectively will support our aspiration of becoming an Outstanding Children service where our children outcomes are in the top quartile of performance. We are aware that there remains the challenge to deliver consistently good performance across all services and we are taking action to address this.

Summaries of our key improvement activity by major services area

3.a Improvement priorities for Children's Early Support and Social Care

The improvements and progress achieved in providing help, protection and care to children was outlined and delivered through an agreed "10 point plan." This approach to structured improvement is closely monitored with clear management oversight and this has become our "business as usual."

The Ofsted report provided a snapshot of our progress and the service has been addressing the identified areas for improvement as well as building on the acknowledged strengths and good practice, and identifying the next stages of our improvement journey. Our priorities are formed from the annual improvement plan and Practice Progress monthly monitoring of data and quality assurance information.

Ofsted "What needs to Improve" response

The quality of recording, assessments and child protection investigations so that children receive help at the earliest opportunity.

Alongside the day to day work undertaken through Supervision and Performance Management the following work will be undertaken to ensure that the quality and timeliness of recording, assessments and Child Protection investigations result in children receiving help at the right time

Coaching:

In order to maximise learning and consistency of practice improvement in relation to recording, assessment and planning there has been a refocus of the audit process. The process of auditing will be underpinned using a coaching approach as a facilitation of learning.

Practice Learning Days (PLD):

Practice Learning Days are quality assurance activities being undertaken in addition to the monthly auditing schedule. The PLD are about learning for the individual practitioner and the service as a whole.

Direct Practice Observation:

Practice observations of social workers on visits to children and families or to group sessions or multi-agency meetings to observe their practice will take place. Reflective feedback will be given to the social worker following the practice and any agreed actions are recorded for monitoring.

Management oversight:

Supervision observation to ensure the child's plan is progressing and that outcomes for the child are improving. Provide feedback and reflective learning action plans.

Phase 2 Liquidlogic implementation

Following the Inspection an external review of the implementation of Liquid Logic was undertaken. This was with a view to gaining insight into barriers to the system providing up to date accurate data that does not require intense additional scrutiny. As part of this review it was determined that all practitioners would benefit from classroom based training. Therefore during the next three months there will be access to a programme of classroom training for all practitioners to improve their understanding of the electronic system. It is an expectation that all practitioners will attend this training as part of the requirements of accessing the electronic system.

The quality of written child in need, child protection and care plans, so that they are timebound, with clear and meaningful contingency plans.

Audit findings from July to September 2019 provide evidence of an improving picture in relation to SMART planning with clear rationale for decision making being evident. There is also evidence of the case history within both the referral and assessment with the analysis of risk being improving. Consistency across all cases remains the challenge and whilst the picture is improving it will still remain a focus for improvement in the next period.

Within the Quality Assurance framework, findings from Children's Social Care audit activity which highlight areas for practice development and these are shared with the Children's Social Care Senior Leadership and the Principle Social Worker.

Where it is identified that individuals /teams would benefit from additional support, direction, guidance, and training, to achieve good quality, consistent recording assessment and planning, the Principal Social Worker takes the lead. The Principal Social Worker's role is ensuring that learning from the audit activity informs development pathways for individuals and/ or teams, the Learning and Development programme for Children's Social Care staff and the wider workforce strategy.

The response to disabled children

Following the Inspection further work has been undertaken to assess the training and development needs for staff within the disabled children's service team, establishing a workforce development plan to ensure all staff receive appropriate training to ensure that practice is consistent/in line with that of wider children's services teams. Consideration is being given to the most effective approach to communicating with children and young people who have specific challenges in relation to speech, sight and/or hearing.

As part of the service review it has been agreed that children with disabilities who are in the care of the Local Authority will have an allocated social worker from the children in care service who will be able to offer a more specialist approach in relation to managing the progression of the children and young person's outcomes and experiences as a child in care.

Children in private fostering arrangements

A new system was introduced in June 2019 for the Private Fostering cases to be allocated to the Assessment and Intervention Team alongside the Connected Persons team to undertake the Private Fostering assessment. Oversight and decision making in respect of Private Fostering now sits with the Service Manager

Awareness raising of Private Fostering in education settings is taking place and Team Managers will be attend the head teachers' meeting. Alongside this the role of 'Private Fostering Officer' has been established and this practitioner will raise awareness across all partner agencies regarding what Private Fostering means. The Safeguarding Partnership is also providing training on duties and powers relating to Private Fostering.

Children at risk from professionals where allegations have been made.

In order to further strengthen the service have appointed an IRO/CP Chair with a significant emphasis on covering LADO duties. The post holder will cover in the absence of and work closely with the substantive LADO.

The response to children who go missing from home and care, so that all children are offered return home interviews that are of good quality, in order to better understand why children go missing and to inform care planning and strategic priorities.

To ensure good oversight of children who are missing we have introduced and developed a daily missing and exploitation meeting. This is a joint meeting with West Yorkshire Police Exploitation and Missing departments allowing an exchange of current information and sharing or significant intelligence around missing children and exploitation. The emphasis is on 'live' missing episodes and those young people missing during previous 24 hrs (including weekends on the Monday).

The meeting incorporates the allocation of return interviews, identifying the most suitable person to capture the best opportunity for meaningful and quality interviews. Through these discussions there is consideration of the return home interviews undertaken to examine information gathered to enable shared learning.

The intelligence gathered is developed and where appropriate shared in the Partnership Intelligence Portal to ensure information secured is accurately recorded and accessible.

We utilise the 14 point Exploitation Assessment to develop mitigating strategies and recognise missing to be an integral risk factor that if addressed will reduce overall risk / vulnerability to exploitation. Through interrogation of information we utilise the MACE process to identify risk (both Missing and Exploitation).

In August 2019 we introduced and commenced Contextual Safeguarding meetings to map associates/threats/risk within complex cases. We are further developing a formal pathway to secure and broaden the understanding of such meetings. This approach is generating intelligence, identifying associates whose risk had been unknown

The timely permanence for children with plans for long-term fostering and children placed with parents

A monthly permanence tracking panel is now embedded with close monitoring and tracking which is ensuring that we are achieving a long term fostering placement for children and young people. We now have recruited 1.5 Social Workers' who are working alongside Social Workers for Children Looked After to achieve their permanence plan in a much more timely way. Robust monitoring of our children who are placed with their parents has seen a continuation in the reduction of the numbers. We have also seen an increase in the numbers of children living with family members who were previously subject to care orders who are now subject to special guardianship orders.

The completion of life-story work for children in care.

During our last inspection there was an acknowledgement that there was evidence of some good life story work however this was not always consistent and there was some variance with the quality. Our Advance Practitioner within the Children in Care service has led a task and finish group across all service areas which has had a focus of how we can improve the quality, they have revisited the resources and tools available and are creating an online resource folder. We have refreshed the training and this continues to be offered across all service to both AYSE and more experienced SW's. Team Managers have more focus as part of their management oversight in ensuring both the direct work and the outcomes of this work are evident on children and young people's files.

Care leavers' understanding of their health histories.

Ensuring that care leavers have an awareness of their health histories has always been a strong focus for the care leavers service however unfortunately this was not evident for a small numbers of our care leavers during the last inspection. As a result the managers in the care leavers service have worked closely with the designated looked after children nurse to review the pathway and to ensure that we have a more consistent and robust approach across all of the service.

The quality of foster carer reviews.

Following the Ofsted Inspection we appointed an IRO to complete foster carer reviews. The IRO has made links with the regional fostering reviewing officer network, to ensure we embrace best practice, which has assisted in development of the role. The new post has resulted in some challenging

conversations, with Supervisory Social Workers who have historically worked in a very different framework and environment. The post holder with management support is developing a new culture of working practice.

The Fostering Reviewing Officer has to date highlighted issues, such as training compliance by carers. Also feeding back any specific training need issues regarding the carer or the training itself. Reviews out of timescale are a focus with a target of 100% being in timescale. On the recording system case summary absence has been highlighted during pre-review checks. Ensuring we capture the voice of the child in care as well as capturing the impact on birth children, feedback relating to the new role has been positive.

Moving forward as part of a broader service review we will move the Fostering Independent Reviewing Officer to join our Independent Reviewing Officer Team enhancing the independence further.

Management oversight across the service through improved performance and quality assurance.

The recent appointment of an additional Service Director within Childrens Service who will have the lead for Resources, Improvement and Partnerships will allow for healthy independent challenge of practice across Childrens Services. This also enable the Service Director, Family Support and Child Protection to focus on the improvement of practice within Social Work Teams.

Regular supervision of social workers that is reflective, directive

There has been a recent agreement to increase both the Team Manager and Service Manager Capacity within the Assessment and Intervention service. This will mean that there is a Service Manager in each of the four areas with oversight of five Team Managers. The Social Work Teams will be reconfigured and the additional Team Manager capacity will reduce social work teams from seven to six. This will also reduce the number of cases overseen by Team Managers as well as reducing Duty from one in three to one in four. It is envisaged that this will create the capacity required to ensure that there is regular, quality, reflective supervision. In addition to this time in monitoring performance and improving the outcomes for our children and young people.

Work of independent reviewing officers (IROs), challenges poorer practice.

Children's Social Care audit activity highlights an increased Child Protection chair footprint on children's files. The number of mid-term reviews completed has improved and there is a renewed emphasis on achieving SMART plans which take full account of the child's voice. Child Protection Conference monitoring forms have been reintroduced to improve management understanding and response to performance and outcomes.

Independent Reviewing Officers (IRO's) for children looked after, closely monitor review timescales to ensure that a high percentage (over 90%) of children's reviews are held on time, alongside which the undertaking of mid-way reviews by IRO's continues to strengthen evidence of IRO oversight.

Service specific performance data provided on a weekly basis to Child Protection chairs and IRO's enables oversight and challenge relating to any identified drift and delay for children and families, where appropriate.

The current improvement plan is designed to reflect the journey of the child and reflect our support and infrastructure developments. As well as incorporating post Ofsted actions it also outlines the actions necessary to continue further progress across the service. The areas identified are

- Early Support

- Front Door
- Assessment and Intervention including Children with Disability
- Sufficiency of placements including young people leaving care
- Children Looked After and Care Leavers
- Leadership and Management Oversight.
- Workforce
- Practice and Professional development
- Quality Assurance
- Partnership

Our current priorities identified by recent data are to work on the timeliness of ICPC and assessments and the robustness of care plans for children living in Supported Accommodation. We recognise that we need achieve consistency in timeliness across a number areas on an ongoing basis to ensure the best outcomes for our children. This remains a major focus of our ongoing improvement work and discussed and considered at our improvement board.

3.b Improvement priorities for children and young people with Special Educational Needs and Disabilities

- Our Children and Young People with SEND has risen since 2016 but is still proportionally less than national figures. In Kirklees we have a total of 2850 Education Health and Social Care Plans, We have a total population of 9,046 children and young people with a SEND need.
- We have an improving picture in relation to our compliance with statutory timescales for completions of EHC plans. 2018 data shows our compliance at 44.5 % however our local data shows our compliance at 73% based on calendar year to date.
- The last Young People’s Survey was conducted in 2018 and included a sample of over 2000 students in year 9 at mainstream schools across Kirklees. Overall 1 in 11 (9%) said they had a special educational need or a learning difficulty, of these over a third (38%) did not feel their school supported them enough. Over one in eight (14%) of all students had a health condition or disability that affects their everyday life. Of these, more than 1 in 4 (27%) felt like they didn’t get enough support for their health conditions from health services.
- SEN students and those with a health condition that affects their everyday life are significantly more likely to have been bullied; both physically and in other ways. Over a quarter (28%) of SEN students have experienced physical bullying. In comparison, one in twelve (8%) non-SEN students have experienced physical bullying.
- We are proud to have a high proportion our of children and young people with SEND educated in mainstream settings (2092 – 77%) and 633 in our local special schools
- Our Children and Young People have highest needs at SEN Support in relation to moderate learning disabilities, speech and language needs and emotional and mental health needs. Where children and young people have an EHC plan, the JSNA shows the highest level of primary need are social emotional and mental health needs (18.9% of total SEN Population) and speech language and communication needs (20.8% of total SEN population). The autism spectrum conditions represents 4.8% of the total SEN population

- We have reduced our autism assessment waiting times significantly in Kirklees to 6 months currently and projected at 3 months by June 2020. We have also reduced our waiting times for learning disability support and intervention to 28 days.
- Our SEND appeals based on appealable decisions are lower than national average and we are in the top quartile nationally in relation to this measure.

Through our local improvement board arrangements we have recently widened the scope and focus of improvement activity to include the SEND agenda. Subsequently, we have undertaken two focused pieces of work to enable us to undertake a diagnostic of our SEND system wide arrangements, and focus activity on consolidating existing good practice and a programme of improvement where challenges have been identified.

Kirklees requested a peer review of key SEND areas through the Yorkshire and Humber ADCS network. The review took place in March 2019 and reflected the strengths of the local arrangements as well as the challenges we faced. A further review has taken place of our ambitions and plans for children and young people with SEND in autumn 2019

We have recently combined the findings of both reviews to produce a Kirklees 10 point improvement plan for SEND. This is currently being consulted on and is being agreed through our governance routes with final sign off at the Health and Wellbeing Board on the 24th of November.

The 10 areas of focus are outlined below:

- **Data baselining and Systems Management**

This will primarily focus on building on the data we have to produce a new data dashboard for SEND. This will enable a deeper insight into a number of key performance indicators allowing for a clearer performance management arrangement across the partnership.

- **Governance Arrangements**

The improvement focus will be to have a single set of governance arrangements that allow for an increased level of scrutiny and oversight from senior system leaders. This will be overseen by the Kirklees Health and Wellbeing Board and be part of our local integrated commissioning arrangements. As our current SEND strategy expires in April 2020 the new governance arrangements will oversee the coproduction of the new strategy.

- **Develop a sustainable financial strategy for SEND**

Through our high needs review we have identified the need to look forensically at the high needs funding model to ensure this reflects our local graduated approach and ensures our local settings can continue to meet children and young people's needs locally. There will be a focus on our children and young people educated out of area and the opportunities to bring those children and young people back to Kirklees where appropriate.

- **Sufficiency and Capacity**

We are refreshing our local sufficiency plan and needs will be assessed for Kirklees as a whole which will include the needs of our children who are looked after, our children with

SEND and additional needs and our children with complex health problems. Our approach to sufficiency will aim to ensure sufficient accommodation and settings, but also sufficiency our services locally to ensure high quality outcomes. The Council recognise this will require significant financial funding and is committed to making the necessary multi-million pound investment.

- **Joint Commissioning Arrangements**

We have well developed joint commissioning arrangements and have a number of jointly commissioning services for children and young people with SEND, including Thriving Kirklees, SALT, Physiotherapy and OT provision and our learning disability and Autism provision. These have resulted in positive outcomes for children and families for example reducing our Autism waiting times from 4 years to 6 months currently. However we have agreed to move toward further integrated arrangements including pooled budget arrangements and further improvement of some health provision such as wheelchair services.

- **Transitions Arrangements**

The main area of focus for this area will be fully embedding our local transition protocol across all stages of transition including post 16 and the local post 16 educational offer for children and young people which includes preparing our young people for adulthood.

- **Co-Production**

Our Local Offer is compliant with the requirements of the Children and Family Act, however we recognise that its current format could be far more user friendly and user focused. Therefore we are coproducing with our local parents group a new specification and will be going out to tender for a new format in November.

- **Performance Management and Quality Assurance**

In this area we will build further on the quality of EHCP's and increase our statutory compliance. This will include re-establishing joint audits with health and social care partners to ensure consistency of outcomes across all agencies. Locally we have an interim designated clinical officer arrangement with our CCG's, our permanent DCO will be in post from January 2020. Currently we have a designated medical officer in South Kirklees and are in the process of replicating this arrangement in North Kirklees.

- **Workforce Development**

This main improvement focus in this area will be to produce a partnership wide workforce strategy that aims to build capacity and confidence across the workforce to meet the needs of our children and young people with additional needs and to enable all practitioners to work with our children and their families and develop meaningful relationships.

- **Communication and Engagement Strategy**

We will further focus on our communication and coproduction across Kirklees. We have a strong track record of coproduction with PCAN (Parents of Children with Additional Needs) our local parents group. However we feel coproduction with the child and young person's voice isn't systematically embedded in our local arrangements, and therefore it is of the highest priority that we embed this as a partnership and within our local commissioning arrangements.

3.c Learning and Education Priorities

Kirklees has a set of rich, diverse and ambitious assets for learning. Our educational provision includes 900 private, voluntary and independent early learning and childcare providers; 170 junior, infant, nursery, primary, middle, secondary and all through schools; six special schools; six school sixth forms including a studio school; two sixth form colleges, one further education college and the University of Huddersfield. These settings reflect the national picture and are changing in nature. 76% of schools are maintained by the Local Authority and 24% operate as part of Multi Academy Trusts. Most are linked to teaching schools.

Irrespective of designation, however, all are part of the Kirklees learning family and serve a large, diverse and growing population with well over 5,000 children and young people in every year group. These children and young people are representative of our communities and include many different origins, cultures, religions and languages.

Our educational outcomes as benchmarked by the *DfE* are inconsistent. Our performance in GCE/A Level/Level 3 Qualifications in top quartile as is our performance on NEET outcomes, significantly outperforming Yorkshire and Humber and statistical neighbours. However, this is not matched at other key stage transitions where performance is much more varied. In a number of areas we are not close to our aspirations to be in the top quartile across all a key learning stage. To address this and draw the whole learning community together we are developing a revised Learning strategy to achieve high performance across all developmental stages.

Summary of 2019 academic outcomes

Early Years and Foundation Stage

- The percentage of 'all pupils' and 'boys' achieving a Good Level of Development (GLD) in 2018 increased at a rate faster than National Provisional data In 2019, suggests that the pace of improvement for the 'All pupil 'group matches the National rate of improvement (0.3%) and the rate of improvement in girls is faster than National (+0.7% improvement on 2018 compared to 0% Nationally). Kirklees boys made a slight improvement on 2018, but this improvement was 0.2% slower than the National improvement.
- The rate of improvement for boys achieving 'at least the expected level' across all areas of learning, increased at a faster rate than National in 2018.
- In 2019, the rate of improvement was similar to the National in most areas of learning, but compared to National decreases in the improvement rate occurred in these early learning goals: 'speaking', 'self-confidence and self-awareness', 'number', understanding the world, AOD' and exploring and using media and materials. (6/17 early learning goals)

Key Stage 1

In 2018

- There was at least a 2% improvement compared to the previous year's outcomes in; Science, Writing and Maths at the expected standard.
- Improvement rates are in line or faster than National were seen in all subject areas at both the expected and greater depth standards. As a result all subjects (except Reading EXP and Maths GDS) moved several places up the LA ranking.
- An Improved performance in Writing has seen in the LA's position increase in the National ranking (from 127) to 116 out of 152.
- Attainment for the FSM 'All pupils' group, increased across each key measure at the expected standard.
- We continue to diminish the gap between 'All pupils' and 'disadvantaged pupils'.
 - Kirklees FSM girls group is now 3% below the National FSM girls group in Reading at the expected standard.(It was 5% in 2017)
 - Kirklees FSM boys are 1% above National FSM boys in Maths.
- A greater percentage of black boys met the National standard in Reading, Maths and science, compared to their National comparators.
- Achievement at the higher standard improved in Reading: +2% and Maths +1%. Improvement in Reading was at a faster rate than National. This can be attributed to the school improvement, focus on Reading in 2017 – 2018.

In 2019,

Improvements greater than the National improvements, in individual subject areas were seen at the expected and higher standard for all subject areas and as a result the LA gap with National is reducing.

- As a local authority, Reading at the higher standard took a slight dip (following the National pattern). All other subjects in Kirklees saw a year on year increase, (this is positive as many subjects saw a dip in National figures). All subjects have moved up the LA ranking (with the exception of Reading at the higher standard).
- This places Kirklees around 2% below National for all measures except Reading at the 'higher standard' (which is 3% below) and science (1 % below).
- Characteristics data will be published in Nov 2019, provisional data suggests we continue to diminish the gap between all pupils and disadvantaged pupils.
 - Kirklees FSM girls group is now 3.5% below the National FSM girls group in Reading at the expected standard.(It was 5% in 2017)
 - Kirklees FSM boys are matching or above National FSM boys in Writing, Maths, science and RWM combined is above National FSM boys combined.
- Despite the these improvements, however, we are aware too many measures indicators remain in the 4th quartile

Key Stage 2

In 2018,

- The proportion of children reaching the expected standard in Reading , Writing and RWM combined scores improved on 2017 outcomes Reading +6%, Writing +2%, WRM +5% (LAIT Dec 2018)
- Attainment at the higher standard improved in all areas except Maths. Reading +4%, Writing +3%, WRM +2%, GPS +5% (LAIT Dec 2018)
- Boy's attainment has improved in Reading, Writing and the RWM combined measure. The rate of improvement in Reading at the expected standard is faster than National, resulting in a reduced gap.

- The proportion of girls meeting the higher standard in Reading and Writing is improving at a faster pace than National, thereby reducing the gap.
- The proportion of Kirklees disadvantaged learners reaching the expected standard in the combined RWM measure has improved at a faster rate than National. Thereby reducing the LA gap between disadvantaged learners in the LA and that group nationally. Internal data suggests a similar pattern was seen in all subject areas at the expected standard for this group.

In 2019,

- When reviewing individual subject areas, greater than National improvements were seen at the expected and higher standard for both Writing and mathematics and as a result the gap with National is reducing in these areas.
- As a local authority, Reading took a slight dip at both standards (following the pattern seen nationally)
- This has resulted in only a slight rise at the combined measure, where 61.8% of children in Kirklees reached the expected standard in combined Reading, Writing and mathematics an increase of 0.2% on 2018 figures. This places Kirklees around 3% below National.
- Increases in LA ranking can be seen in 7 out of the 10 subject / standards at KS2. Maths saw the greatest increases. Reading took a greater than National drop. Band increases were seen in 3 of the subjects at the expected standard. Improvements are needed in all subject areas to meet the National average with the greatest improvements needed in Reading at the expected standard, which is 3 percent below National, at the Higher standard this is 4 percent below National. The Reading outcomes affected the LA outcomes in the combined measure.
- Writing at the higher standard is also 4 percentage points below National. Lead moderators have been made aware and this will be used to inform moderation planning / training.
- Despite the these improvements, however, we are aware too many measures indicators remain in the 4th quartile

Key Stage 4

In 2018,

Kirklees learners in KS4 have outperformed local, statistical neighbours and National figures since 2012 (5 A* - C (EM) and Attainment 8)

- The overall Progress 8 (-0.05) score is well above the floor and coasting standard and above that of statistical neighbours and National (National -0.08, LAIT Dec 2018). Rank 76 (68 in 2017).
- Attainment 8 is 45.20, 0.3 above the average for regional LA's (44.9) , 0.06 above statistical neighbours (45.14) and 0.9 above all schools Nationally (44.3) and now ranked 90 out of 152 LA's (Rank 91 in 2017).
- The percentage of children achieving the grade 9 – 5 pass in English and Maths (42.1%) is above our regional LA's (40.7%), statistical neighbours (40.84%) and National average (39.9%). (LAIT Dec 2018). Rank 77 Band C (Rank 82 in 2017). Our rate of improvement in this measure is more than twice as fast as that of National. Kirklees improvement 0.7%, National 0.3%.
- The percentage of children achieving the grade 9 – 4 pass in English and Maths (63.2%) is above our regional LA's (62.1%), statistical neighbours (62.15%) and National average

(59.1%). (LAIT Dec 2018). Rank 80 Band C. (Rank in 2017 89 Band C). Our rate of improvement in this measure is greater than that of National. Kirklees improvement 0.6%, National 0%.

- EBacc entry percentage was 41.5% and has increased by 7.40% in Kirklees compared to 0.1% nationally. Currently 6.4% above National. Ranking the LA at 53 out of 152 LA Band B. (Rank 102 Band C in 2017).
- EBacc APS is a new measure in 2018. Kirklees average point score is currently 3.95, 0.12 above National (3.83). This places Kirklees in Band C ranked 85 out of 152 LA's.
- The Kirklees APS across the EBacc pillars (Humanities 3.42, Maths 4.41, Science 4.44 and English 4.85) was above National for each component. The Language pillar is below National with an APS of 2.12 compared to 2.28.
- Based on provisional data there are two schools below floor. (Three further schools remain at risk awaiting validated data January 22nd). In 2017 there were 2 schools below floor compared to an average of 3 schools with statistical neighbours. In 2017 12% of schools in England were below floor compared to 7.7 % in Kirklees, Rank 48 Band B.
- There are currently 11 schools below -0.25 this academic year however, there are only 2 schools meeting the full coasting measure with a 3 year trend. In 2017 there were 3 schools coasting compared to an average of 3.4 schools with statistical neighbours? In 2017 9.6% of schools in England were coasting compared to 12.5 % in Kirklees, Rank 99 Band C. 2018 data yet to be released.

Attainment for children with English as an additional language was 4.5, significantly below National 4.52. However, their progress was +0.26 significantly above National. (FFT Dec 2018).

- Attainment for Indian children is 5.3 significantly below National comparators. However, their progress is +0.46 which is significantly above National. (FFT Dec 2018).
- Attainment for Pakistani children is 4.3 significantly below National comparators. However, their progress is +0.13 which is significantly above National. (FFT Dec 2018).
- Attainment for children with English as an additional language is significantly below particularly at grade 5 for English literature and French. Geography, German, Spanish and science double award are significantly below at grade 4 and grade 5. This impacts negatively on the Ebacc APS overall.
- Attainment for Pakistani children is sig below in English Language, lit mathematics French and science – all pillars bar History. There is more of an issue at grade 5 than grade 4. 880 / 4560 children (One fifth of the year 11 cohort are Pakistani. The major Asian cohort makes up approximately one quarter of the year 11 cohort.)
- Progress for Pakistani children in English Language, chemistry and History is sig above. French, Geography, German, Spanish, are significantly below. 137 studied Urdu with 81% grade 4 and 58% grade 5 GCSE Urdu.(FFT Dec 2018)

Most Kirklees schools continue to provide a rich curriculum for their students ensuring a good balance between meeting National requirements and addressing diversity. (FFT Dec 2018 & % entered for Ebacc). Six schools have an entry level per pupil below 8, statistically significantly below National.

In 2019,

- Attainment in many of the headline measures has seen a similar to National dip this year. Whilst still above nation in attainment 8, Ebacc APS, basic 4+ and Basic 5+, a drop in Ebacc entries has contributed to a drop in Ebacc 4+ grades (below National).
- Attainment 8. The LA attainment score has decreased by 0.3, from 45.4 in 2017 / 2018 to **45.1 in 2018 / 2019**, the National attainment 8 score has increased by 0.1 from 46.5 in 2017

/ 2018 to **46.6** in 2018 / 2019. The Gap between the LA and National is now 1.5 below National.

- Kirklees has achieved an English Bacculaureate average point score of **3.93**. **36.7%** of the LA's cohort were entered for English Bacculaureate, a total of **1,730 pupils**. The Kirklees English Bacculaureate average point score is **0.07 points higher than** the National cohort, who have an English Bacculaureate average point score of 3.86 .
- **42.4%** achieved a grade 5 or more in English & Maths, a total of **1,998 pupils**.
- **63.1%** of the LA's cohort achieved a grade of 4 or more in English & Maths, a total of **2,975 pupils**. Whilst the LA average dropped by 0.1 %, the National average fell by 0.4%, thus narrowing the gap with National to 0.5 below National.
- Ebacc 5+ whilst still below National is on a 3 year increase and the gap is now 0.9% below National. Progress is currently -0.1, with poorer percentage pass in attainment and progress seen in the open pillar, and the languages pillar.

Strategic areas for improvement (LA priorities)

Overall, our key areas for improvement lie within the primary sector, from early years through to the end of key stage 2. Most measures show an improvement in attainment from 2016. We have diminished the difference in a number of measures. However, there are still some attainment and progress gaps that we are addressing as outlined below:-

Early Years and Foundation Stage

- Continue to increase outcomes in Communication and Literacy
- Increase outcomes in Mathematics
- Continue to reduce the LA gender gap from 13.7% GLD
- Continue to work with 'early start' to ensure provision for the 65% of pupils who access year N in the PVI sector, to promote school readiness.

Key Stage 1

- To improve the pass rate in phonics in 2020
- To diminish the attainment gap between Kirklees children compared to children nationally in reading
- To continue to diminish the attainment gap between Kirklees children compared to children nationally in writing
- To continue to diminish the attainment gap between Kirklees children compared to children nationally in Maths

Key Stage 2

- To improve outcomes in Reading and further diminish the gap between the LA's outcomes and national at the expected level
- To continue to improve outcomes in writing, particularly for high attaining pupils
- Continue to Improve outcomes in mathematics

Key Stage 4

- To continue to diminish the difference between Kirklees pupils and pupils Nationally at attaining grade 5+
 - In English language

- In Maths.

- Continue to increase the percentage of pupils entered on EBacc routes to ensure Kirklees meet the government target of 75% in 2022 (Particularly in Humanities and languages
- Raise percentage of pupils attaining grade 5+ in the EBacc Pillars (Mathematics, English, Science, Humanities, and Languages). Particularly in Humanities and Languages
- To continue to increase the proportion of students attaining grade 5+ in any qualification, with particular reference to : -
 - Boys
 - Disadvantaged
 - SEND
 - EAL

In addition to these educational indices we are aware of the other pressures within the educational community. Our attendance indicators benchmark generally in the 2nd national quartile and we want to build on the performance here as we know that consistent attendance is critical in educational outcomes. We are also opening a dialogue with schools on alternative approaches to Exclusions, particularly in Primary schools, as we recognise the disproportional impact this can have on vulnerable groups and we know there is room for further development here. We are also working closely with our school partners on recruitment and retention pressures as well as developing well-being strategies with schools to support staff.

Name of meeting: Children's Scrutiny Panel
Date: 16th December 2019
Title of report: Children's Services Improvement Journey

Purpose of report: To provide Scrutiny Panel with an overview of the Improvement Journey in Children's Services in 2019.

Key Decision - Is it likely to result in spending or saving £250k or more, or to have a significant effect on two or more electoral wards?	Not Applicable If yes give the reason why
Key Decision - Is it in the <u>Council's Forward Plan (key decisions and private reports)</u> ?	Key Decision –No Private Report/Private Appendix – Yes/No
The Decision - Is it eligible for call in by Scrutiny?	Not Applicable If no give the reason why not
Date signed off by <u>Strategic Director</u> & name	Elaine McShane for Mel Meggs 6 th December 2019
Is it also signed off by the Service Director for Finance IT and Transactional Services?	Not Applicable
Is it also signed off by the Service Director for Legal Governance and Commissioning Support?	Not Applicable
Cabinet member <u>portfolio</u>	Councillors Kendrick and Pattison

Electoral wards affected: All

Ward councillors consulted:

Public or private:

Has GDPR been considered? Yes

1. Summary

The report was submitted by the Director of Children's Services as part of the "Annual Conversation" with Ofsted in November 2019. The Annual Conversation between Ofsted and local authorities is part of the inspection system and a formal discussion and meeting with lead inspectors in the region. Alongside self-evaluation, this helps local authorities to critically evaluate their own performance and articulate what they think is working well for children in their area.

The conversation covered progress and developments over the last year in three major areas of the improvement work in the Directorate:

- Improvement priorities for Children's Social Care and Early Support (Pages 7 – 11)
- Improvement priorities for children and young people with Special Educational Needs and Disabilities (Pages 12 – 14)
- Improvement priorities for Education and Learning (Pages 14 – 20)

2. Information required to take a decision

There is no formal decision required

3. Implications for the Council

- **Working with People**
Not applicable

- **Working with Partners**
Not applicable

- **Place Based Working**
Not applicable

- **Improving outcomes for children**
The work outlined in this report is a major priority for the authority in achieving its ambitions for children, young people and families in Improving Outcomes for Children. The ILACS (Inspection of Local Authority Children's Services) in June 2019 confirmed the significance progress made in Kirklees as well as highlighting further development areas which were addressed in the Annual Conversation. It also addresses partnership working and how Children's Services is developing its place based working approach.

- **Other (e.g. Legal/Financial or Human Resources)**
Not applicable

4. Consultees and their opinions

This report is to Children's Services Scrutiny Panel in its capacity of reviewing the work in the Directorate.

5. Next steps and timelines

This report represents ongoing work across the Directorate and is reviewed on a regular basis including at Portfolio briefing, Improvement Board

6. Officer recommendations and reasons

For Children's Services Scrutiny Panel to receive this report and review its contents and provide feedback.

7. Cabinet Portfolio Holder's recommendations

Not applicable

8. Contact officer

Paul Harris – Children's Services Improvement Manager (Tel 01484 221000 ext 78122 / paul.harris@kirklees.gov.uk)

9. Background Papers and History of Decisions

Appendix 1 – Annual Conversation with Ofsted Self-Assessment

10. Service Directors responsible – Mel Meggs, Elaine McShane, Jo-Anne Sanders and Tom Brailsford.

This page is intentionally left blank

Name of meeting: Children’s Scrutiny Panel
Date: 16th December 2019
Title of report: Almondbury Community School

Purpose of report: To provide Children’s Scrutiny panel with an update on the implementation of the Council’s decision to change the age range of Almondbury Community School from the 1st September 2020.

Key Decision - Is it likely to result in spending or saving £250k or more, or to have a significant effect on two or more electoral wards?	n/a
Key Decision - Is it in the <u>Council’s Forward Plan (key decisions and private reports)?</u>	n/a
The Decision - Is it eligible for call in by Scrutiny?	n/a
Date signed off by <u>Strategic Director</u> & name	Jo-Anne Sanders (for Mel Meggs) – 03.12.19
Is it also signed off by the Service Director for Finance IT and Transactional Services?	n/a
Is it also signed off by the Service Director for Legal Governance and Commissioning Support?	n/a
Cabinet member <u>portfolio</u>	Cllr Carole Pattison – Learning and Aspiration Cllr Viv Kendrick – Children’s Services

Electoral wards affected: Almondbury

Ward councillors consulted: N/A

Public or private: Public

Has GDPR been considered? GDPR has been considered. The information in this report does not identify any individuals.

1. Summary

Following the decision by Kirklees Council Cabinet to change the age range of Almondbury Community School (ACS) from 3-16 years to age 3 – 11 years on 1st September 2020, thereby removing the secondary phase of the school on the 16th July 2019 and the subsequent Children's Scrutiny Panel call in meeting on 7th August 2019 where it was agreed that the decision should be freed for implementation, regular updates have been considered by Children's Scrutiny Panel.

A progress report was provided to Children's Scrutiny on 11th October 2019.

This report aims to provide Children's Scrutiny panel with a further update on the progress that has been made in terms of implementing the decision most importantly the transition arrangements for current pupils of Almondbury Community School.

2. Current position

Working in partnership with Almondbury Community School, King James's School, Netherhall High School and Newsome High School

Officers have continued to work in partnership with Almondbury Community School, King James's School, Netherhall High School and Newsome High School. This has resulted in a number of positive actions detailed in this report.

Clarity for parents of secondary age pupils currently on roll at Almondbury Community School (Y7-11)

The letter attached at Appendix A was sent on 17th October to parents and carers. The letter offers the opportunity for parents to preference a place at either King James's School, Netherhall High School or Newsome High School from September 2020 or earlier in some cases if this makes sense. This offer does not remove the right of parents to request in-year transfers.

The deadline for returning the preferences forms was Friday 8th November. As at 3rd December the vast majority had been returned with just 15 outstanding. Since before the deadline date intensive support has been put in place to encourage preference returns for every pupil. This has involved support from a cross section of services including Pupil Admissions, Attendance and Pupil Support, ACS staff and other key professionals already know to the family. This individual support for families continues for the remaining outstanding returns.

There are sufficient returns to move forward with the detailed planning for high quality transition. Plans are well developed to make the formal offer of a school place to all pupils in the very near future. The detailed transition planning will also inform the opportunities which can be made available for staff at ACS.

A statement has been published about commitments to a school uniform support package following engagement with a small number of parents. Details are attached at Appendix B. Officers are in the final stages of developing a process to enable pupils to receive free items of uniform and to provide a direct payment contribution to the parents of pupils who have already moved schools 'in-year' and have already purchased a new uniform.

Given the preference options provided, there have been very few questions from parents about support with transport. Where one or two questions have been raised there is ongoing work with the family to understand their individual circumstances.

Admissions Arrangements

Verbal updates have been provided to Children's Scrutiny Panel after the publication of the October update report to confirm approval by the Office of the Schools Adjudicator to amend admission arrangement for 2020/21 as follows:

- King James's School change to their catchment area (PAA) to include the primary admission areas of Almondbury Community School and All Hallows' CE(VA) Primary School
- Newsome High School change to their catchment area (PAA) to include the primary admission area of Lowerhouses CE(VC) J, I and EY School.
- Netherhall Learning Campus High School change to their catchment area (PAA) to include parts of Moldgreen Community Primary School and Dalton School primary catchment areas (south of A642) which form part of the current Almondbury Community School secondary catchment area.

The same changes will be consulted upon in the usual admission consultation cycle starting this month for 2021/22 admission arrangements. The intention is to normalise these arrangements into the future.

With the 2020/21 arrangements confirmed in mid-October, current Year 6 pupils at Almondbury Community School have been tracked with regard to their application for a secondary school place. Extra measures were introduced which resulted in all families who have not made an application were contacted directly before the 31st October application deadline. As a result, all pupils have submitted an application for a secondary school place.

Ofsted monitoring

On the 12th and 13th November 2019 Ofsted undertook a monitoring visit at ACS. As an open school, this is normal practice and the outcome from the visit will be published in the form of a letter on Ofsted's website in due course.

3. Implications for the Council

3.1. Working with People

In order to ensure that smooth transition arrangements are in place for all children who are affected by the removal of the secondary phase at Almondbury Community School we are working closely with local schools to ensure that transition arrangements for pupils are carefully planned and managed and that the needs of each child are taken into account to ensure that they achieve the best outcomes.

3.2. Working with Partners

Continued partnership working and a commitment to achieve the best outcome for every pupil by all is ensuring that progress is continuing to be made.

Regular meetings with Almondbury Community School Interim Executive Board are taking place along with the leaders of local secondary schools regarding the future of the secondary school pupils.

Discussions are taking place with the future academy sponsor, Impact Multi Academy Trust, to ensure that they are engaged at this stage and ensure that the primary pupils and their needs are also considered as part of the project.

3.3. Place Based Working

Throughout the process and by strengthening partnership working we aim to ensure that there are long term sustainable, high quality educational opportunities for children locally. We have been able to offer all current ACS pupils the opportunity to submit a preference for a place at a local school.

3.4. Improving outcomes for children

Throughout programme of works involved, improving outcomes for children is at the heart of everything. In addition to ensuring that there are sufficient secondary places in the local area we continue to aim to maximise opportunities to:

- Offer high quality and inclusive education and diversity of provision to all
- Provide a breadth of curriculum offer that enables young people to have access to the widest opportunities to fulfil their aspirations and ambitions
- Be financially viable and therefore have future security
- Promote equality of opportunity
- Strengthen community cohesion
- Use sustainable travel and transport for school

3.5. Other (e.g. Legal/Financial or Human Resources)

Work has begun looking at the financial implications of the project to deliver on commitments made to deliver on the outcomes detailed above. Plans are in place to take a report detailing this to cabinet for their consideration and approval.

The impact on staffing is being considered and engagement has begun with staff, TU's and school leaders on future options. This work will progress as the outcome of the preferencing becomes clear and formal discussions can begin.

4. Consultees and their opinions

There is a communications strategy in place that includes regular briefings with Ward Councillors where they are provided with regular updates.

Briefings with staff have taken place and regular TU meetings have been arranged.

Engagement with parents/carers is ongoing. An open evening was held on 24th October to help parents/carers make a decision about their preference. Representatives from King James's School, Netherhall High School and Newsome High School were available for one to one conversations with parents alongside local authority staff.

5. Next steps and timelines

- Formal offer of a school place to be issued for all current ACS pupils
- Working with local schools on high quality transition arrangements
- Formal offer of the uniform support package to be made to parents
- Continued engagement with local schools and ACS staff and their unions on options for the future
- Admission arrangements consultation to propose normalising temporary admission arrangements
- Produce and review options and proposals relating to each of the school buildings to ensure that they can accommodate the required number of pupils and are fit for purpose going forward
- Build on links with the academy sponsor of the primary school to ensure that they are involved and can input into decisions relating to the primary school.

6. Contact officer

Jo-Anne Sanders – Service Director Learning and Early Support

Jo-anne.sanders@kirklees.gov.uk

Martin Wilby – Senior Strategic Manager – Learning Places and Access

Martin.wilby@kirklees.gov.uk

7. Background Papers and History of Decisions

[Future Options for ACS - Cabinet Report - 19 March 2019 \(agenda item no 20\)](#)

(Background and seeking permission to consult)

[Future Options for ACS - Outcome Report for Cabinet 29 May 2019 \(agenda item no 9\)](#)

(Outcomes of the consultation and next steps including publication of statutory notices)

[Future Options for ACS - Final Decision report for Cabinet - 16 July 2019 \(agenda item no 8\)](#)

(Final decision)

[Call-in of Cabinet decision in relation to Almondbury Community School](#)

(Call-in in relation to the decision taken by Cabinet)

8. Service Director responsible

Jo-Anne Sanders – Service Director Learning and Early Support

Jo-anne.sanders@kirklees.gov.uk



Directorate for Children & Young People

**Directorate for Children & Young People
School Organisation and Planning Team**

Second Floor
Kirkgate Buildings
Byram Street
Huddersfield
West Yorkshire
HD1 1BY

Tel: 01484 221000

acsadmissions@kirklees.gov.uk

Date: 17th October 2019

Dear Parent / Carer,

Ref: Almondbury Community School – Transition of Secondary Phase pupils

You will already be aware that in July 2019 Kirklees Cabinet made the decision to change the age range of Almondbury Community School (ACS) and remove the secondary phase of the school from September 2020.

As previously communicated, this means ACS will operate as normal for the current academic year. From September 2020 there will be no new Year 7 starters and all existing pupils from the current Year 7 to current Year 10 will need to transfer to the roll of another school. To help manage transitions, the current Fernside site will be available for a further academic year.

We have listened to parents/carers and our shared priority is that transitions need to be well planned, well supported, take account of siblings and provide the opportunity for keeping friendship groups together.

Throughout the process we have continued to work in partnership with local secondary schools and government agencies and we wish to thank parents/carers for their patience during this period. As a result of this work, we are now able to provide the information we know is important to parents/carers to enable them to make an informed preference for one of the following schools, all of which are local to Almondbury.

<p>King James's School</p>	<p>Pupils will be able to join the roll of King James's School from September 2020. King James's will use the Fernside Avenue site (alongside their main school site) from September 2020 for at least one academic year. We are working with King James's to ensure that their main site is developed so that it can accommodate all pupils on a permanent basis in the future. Subject to the completion of this work, King James's will no longer use Fernside and all their pupils will be on the main site.*</p>
<p>Netherhall Learning Campus High School</p>	<p>Pupils will be able to join Netherhall Learning Campus High school, who currently have spaces in some year groups and will make additional places available where possible to meet the preferences expressed by ACS parents/carers. Any pupils who join Netherhall will be accommodated on Netherhall's main site. We are exploring opportunities for some refurbishment work to ensure suitable accommodation is available on a permanent basis.*</p>
<p>Newsome High School</p>	<p>Pupils will be able to join Newsome High School who currently have spaces in some year groups and will make additional places available where possible to meet the preferences expressed by ACS parents/carers. Any pupils who join Newsome will be accommodated on Newsome's main site.</p>

* It is important to note that we are working in partnership with King James's and Netherhall to create a small number of extra places for future Year 7 intakes. This is in addition to supporting transitional arrangements for pupils.

We absolutely understand that you will want to consider this information carefully. For instance, you may wish to take into account how expressing your preference could impact on all your children in the future. We are very keen to support you in expressing your preference and would like to invite you to an open evening on Thursday October 24th.

The open evening will be held at Almondbury Community School, Fernside Avenue building, with representatives from King James's School, Newsome High School and Netherhall Learning Campus High School. Also available to provide advice will be staff from Kirklees Pupil Admissions and staff specialising in Special Educational Needs and Disabilities. You can drop in any time between 6pm and 8pm to gain further information and ask questions.

We know that many families have bought school uniform items for ACS which will not be needed in the future. As new uniform will be required for a different school, we can assure you that we will be providing a uniform support package for all existing ACS pupils (as at the date of this letter). Further details will follow and parents/carers are advised to wait until this information is available before purchasing any items of uniform.

Some questions have also been raised about support for transport arrangements. We anticipate that the offer of a place at one of three local schools will mean this is no longer a significant issue for the majority of parents/carers. The existing Kirklees Home to School Transport policy is available at www.kirklees.gov.uk/schooltransport. If transport remains a concern we will speak with individual families to fully understand their circumstances

We understand that parents/carers will want to take account of all their children when making these important decisions. Relevant for parents/carers with younger children (currently in Year 6 and below) are the changes that have been made to secondary school catchment areas. Full details are available at: www.kirklees.gov.uk/schoolorganisation Information will also be available at the open evening.

Next steps:

Parents/carers with children in Years 7 to 10 are asked to make a preference for the school they would like their child(ren) to transfer to in September 2020 using the attached form. The deadline for making a preference is 8th November 2019.

It is important that we fully understand parental preferences so we can work in partnership with local schools and carry out detailed planning. This will help us to ensure smooth transitions, a high quality curriculum offer for every pupil and a high level of support.

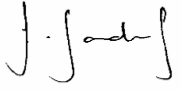
Most pupils will join their new school in September 2020, although there may be opportunities for some groups of pupils to move earlier where this makes sense and a high quality transition can be planned.

Individual support will be provided for Parents/carers of pupils with an Education, Health and Care Plan by specialist staff.

We will write to you again, including the formal offer of a school place, as soon as possible after the closing date for preferences. We are only asking parents/carers for one preference per child as every effort will be made to match this preference with the formal offer of a school place.

We would like to reiterate that the decision to change the age range of ACS was taken because we want all children and young people to enjoy the best possible standards of care and education in a school which is sustainable for the long term. Our absolute priority is to support young people and achieve excellent outcomes.

Yours sincerely

A handwritten signature in black ink, appearing to read 'J. Sanders'.

Jo-Anne Sanders
Service Director for Learning & Early Support

Almondbury Community School - Pupil Preference Form

Please select your preferred school below (select **one** school only by putting an X in the relevant box):

King James's School.....

Netherhall Learning Campus High School.....

Newsome High School.....

None of the above. Please provide me with information about the in-year admission process.....

Parent/carer name/s _____

Postcode _____

E-mail address _____

Child's name _____

Child's current Year group _____

**Please complete one form for each of your children currently in years 7 to 10
and return by 8th November 2019**

Completed forms can be returned by:

Handing in to the office at Almondbury Community School
(additional copies of the forms are also available from the school office)

or

Emailing to; acsadmissions@kirklees.gov.uk

(a Word version of the form can be downloaded from www.kirklees.gov.uk/schoolorganisation)

I have read and understood the information on this form and I confirm that I have parental responsibility for this child

Signature of parent/carer _____ Date _____

(The information you provide will be used only in order to allocate your child a school place. It will be stored securely and will not be disclosed to any other person or agency, apart from relevant schools and admission authorities).

Almondbury Community School Uniform Support

Full details of a uniform package will be made available in good time to support well managed transitions. This is likely to include the free provision of school specific items of uniform e.g. where item contain school branding. Wherever possible parents are therefore advised not to purchase new uniform items until further information is made available. It is recognised that children will grow out of generic items of uniform such as shirts, blouses, trousers, skirts and shoes and parents may wish to take into account the uniform policy at the school they have placed a preference if they are replacing these items. Electronic links to the uniform policies which are available on each school website are provided below;

Almondbury Community School	Netherhall Learning Campus High School
https://www.almondburycs.org.uk/page/?title=School+Uniform&pid=99	http://www.nlconline.org.uk/highschool/school-life-1/uniform
King James’s School	Newsome High School
http://www.kingjames.org.uk/app/os#!/parents-2/uniform-2	https://newsomehigh.co.uk/wp-content/uploads/Uniform-Expectations.pdf

Where parents/carers have chosen to exercise their right to apply for a school place outside the managed transition process and their child has already transferred to another school, support will still be available. This will come in the form of direct payment from Kirklees Council to the parent/carer towards the cost of school specific items of uniform (as most families in this situation will have already purchased these items). This will apply to all pupils in current years 7 to 10 who were on the role of Almondbury Community School on the last day of term in July 2019.

Every child is being tracked from this time and specific information will be sent directly to each family when it is available.

CHILDREN'S SCRUTINY PANEL – WORK PROGRAMME 2019/20

MEMBERS: Cllr Andrew Marchington (Chair), Cllr Paul White, Cllr Amanda Pinnock, Cllr Aafaq Butt, Cllr Richard Smith, Cllr Paul Davies, Linda Summers (Education Co-Optee), Dale O'Neill (Co-Optee), Toni Bromley (Co-Optee)

SUPPORT: Helen Kilroy, Principal Governance & Democratic Engagement Officer

FULL PANEL DISCUSSION		
ISSUE	APPROACH/AREAS OF FOCUS	OUTCOMES
Special Educational Needs	<p>Monitor the progress of the recommendations from the Panel made to Cabinet following an investigation by the Panel into how SENDACT interacted and worked with parents and carers. The report contained the response of the Cabinet Portfolio Holders to the investigation findings which was approved by Cabinet in March 2019.</p> <p>The Panel agreed to consider progress updates during the 2019/20 municipal year.</p>	<p>That the Panel are confident that:-</p> <ul style="list-style-type: none"> • Children with SEND are receiving the appropriate support. • That SENDACT are fully prepared for the Ofsted inspection. • That SENDACT is a service that is regarded as 'good', with partners working alongside to ensure there is no delay for children. <p><u>Panel Meeting on 23 September 2019</u></p> <p>The Panel considered a report giving an update on the recommendations made by Scrutiny and actions taken on the SENDACT Action Plan.</p> <p>The Panel agreed –</p> <ol style="list-style-type: none"> 1. That they wanted to see greater clarification in the timescales outlined in the SENDACT action plan; 2. That the panel wanted to see that the voice of young people was captured and reflected in the work of SENDACT. <p>A further update report will be considered by the Panel at a later date.</p>
1. Exploitation Strategy	<p>The Panel considered a joint presentation by West Yorkshire Police and Senior Officers from Kirklees on CSE, Safeguarding and Licensing in March 2019 and agreed to be kept informed and to be able to contribute to the future work on the Exploitation Strategy and consider the findings of the Dr Peel Review in the new 2019/20 municipal year.</p> <p>Future reports should provide an update on sexual harm prevention</p>	<p>That the Panel is assured that lessons had been learned from previous cases of CSE.</p> <p>That the Panel is convinced that the best practices identified following the review by Dr Peel are being implemented in Kirklees, and ensure good outcomes for vulnerable children.</p> <p>That as many takeaways and accommodation providers as possible receive exploitation safeguarding training. That these providers begin to feel more comfortable and better informed as to how and when to</p>

FULL PANEL DISCUSSION

ISSUE	APPROACH/AREAS OF FOCUS	OUTCOMES
	orders and what has been learned from the historic cases.	<p>report potential safeguarding issues.</p> <p><u>Panel Meeting 23rd August 2019</u> The Panel considered and noted an overview of the work that had been undertaken in response to improving the quality of practice and to prevent children being at risk and vulnerable to harm and abuse from Exploitation and or from going missing from home or care.</p> <p><u>Panel Meeting 17th January 2020</u> The Panel will consider a follow up report on Dr Peel’s practice findings and an update on the Exploitation Strategy.</p>
<p>2. Kirklees Safeguarding Children’s Board (KSCB)</p>	<p>Review the improvements of the KSCB.</p> <p>The Panel will consider an update report on KSCB at a future meeting of the Panel in the 2019/20 municipal year.</p> <p>Future reports to the Panel should advise how Kirklees will implement the new national strategies on children’s safeguarding.</p> <p>The Panel will consider the Kirklees Safeguarding Children’s Board Business Plan.</p>	<p>That the Board is considered as ‘good’ and that the Panel is satisfied that it is effective and accountable.</p> <p>That the Panel is convinced that the best practices identified following the review by Dr Peel are being implemented in Kirklees, and ensure good outcomes for vulnerable children.</p> <p><u>Panel Meeting 23 September 2019</u> The Panel considered a presentation from Sheila Lock, Chair of the Kirklees Safeguarding Children’s Board, outlining the following highlights:-</p> <ul style="list-style-type: none"> - her role to Chair the multi-agency arrangements in Kirklees which was aimed at safeguarding and protecting children.; - the process that had been followed in establishing the new partnership arrangements that included Kirklees, the police and health through the clinical commissioning groups; - Kirklees had submitted its revised safeguarding arrangements to Government in May 2019 and the new arrangements were currently being implemented. <p>The Panel agreed –</p>

FULL PANEL DISCUSSION

ISSUE	APPROACH/AREAS OF FOCUS	OUTCOMES
		<p>1. That they acknowledged the need to continue to focus and promote openness and transparency in safeguarding matters and would investigate the effectiveness of this approach;</p> <p>2. That they would consider further the Panel's role in supporting and challenging the work of safeguarding partnerships in helping to reduce the risks to young people.</p> <p>The Panel will scrutinise partnership working and will attend and observe the following:-</p> <ul style="list-style-type: none"> • a Multi-Agency meeting (Children's Services) in December 2019; and • a visit to Locala's Single Point of Access at Northorpe Hall in December 2019. <p>The Panel will scrutinise the process for developing the Children and Young People's Plan, which outlines the services priorities.</p>
<p>3. Early Support Partnership (Edge of Care)</p>	<p>To maintain an overview of the work done to improve the Edge of Care in Kirklees.</p> <p>In April 2019, the Panel considered an update on the development on the three programmes funded through the Department for Education (DFE) Innovation Funding and agreed to consider an update in the 2019/20 municipal year giving data and statistics on the Early Support Partnership following development of the practices.</p>	<p>The Panel is assured that the Early Support Strategy in Kirklees is clarified and enhanced, and should include consideration of whether good practice from other areas might be effectively adapted for use in Kirklees.</p> <p>That as part of clarifying the Early Support approach, the role of Schools is considered and schools have the opportunity to be part of the approach.</p> <p>The Panel will consider arranging a visit to the Early Support Teams to gain a better understanding of the work that was being undertaken and the impact it was having and that this be considered as part the Panel's work programme for the 2019/20 municipal year.</p> <p><u>Panel Meeting 8th November 2019</u></p> <p>The Panel considered an update on the Early Support Partnership. The Panel agreed:-</p> <ol style="list-style-type: none"> 1. That the Panel consider data and analysis on the key areas of the

FULL PANEL DISCUSSION

ISSUE	APPROACH/AREAS OF FOCUS	OUTCOMES
		<p>Early Support approach when it was available.</p> <p>2. That the Panel consider information at a future meeting regarding how the intervention work being carried out could have an impact in reducing the risks of tensions within families and how this might impact in terms of repeat referrals, children coming into care and child protection plans.</p> <p>3. That the Panel consider information giving further detail on the outcomes of all referrals to Family Group Conferencing or the reasons why these may not have been successful.</p>
<p>4. Elective Home Education Ad-Hoc Panel</p>	<p>The next steps from the Ad-Hoc Panel will be to gather further evidence which will be sought from:-</p> <ul style="list-style-type: none"> • A leading elective home education expert • Other local authorities in the area, to consider their offer for elective home educators • Parents of those local authorities mentioned above to explore their experiences • Head Teachers forums (primary, secondary and special schools) 	<p>The Panel is assured that that children who are home educated receive the best offer from Kirklees council.</p> <p>That the Panel is content that any new Elective Home Educating policy is updated and fit for purpose.</p> <p>The EHE Ad-Hoc Panel will commence its work and produce a final report on its findings early in the 2019/20 municipal year.</p> <p style="color: red;">Overview and Scrutiny Management Committee on 4th November considered an update report on the progress of the Ad-Hoc Panel and agreed that the findings report be shared with the Children's Scrutiny Panel in March 2020 and considered by the Committee in April 2020. (Carol Tague to confirm)</p>
<p>5. Review of the Improvement Journey</p>	<p>The Panel considered the Ofsted report following the inspection of Children's Services in June 2019 and will receive future updates as appropriate.</p> <p>The Panel will review the improvement journey of Children's Services and gather evidence as part of holding the service to account.</p>	<p>That the Panel is confident Children's Services is continuing to improve and protect the vulnerable children and young people of Kirklees.</p> <p><u>Panel meeting on 23rd August 2019</u></p> <p>The Panel considered and noted the outcome of the Ofsted Inspection regarding Children's Social Care Services and agreed:-</p> <p>1) That the continuing work and actions to be taken to achieve improved outcomes as the next stage of the improvement journey, and the role of</p>

FULL PANEL DISCUSSION

ISSUE	APPROACH/AREAS OF FOCUS	OUTCOMES
		<p>the Panel in supporting this, be noted. 2) That arrangements be put in place to arrange a Panel session regarding improving partnership working and governance structures.</p> <p><u>Panel Meeting 17 January 2019</u> The Panel will consider a report on partnership working and governance structures.</p> <p>The Panel will attend and observe the following meetings to scrutinise and gather evidence:-</p> <ul style="list-style-type: none"> - Sufficiency Placement meetings - Multi-Agency meeting on 2nd December 2019; - Early Years Event in January 2020 and consider a formal report at a future meeting giving feedback and next steps; - Practice Progress meetings; - Visits to key health partners – Northorpe Hall (Locala) Single Point of Access on 9th December 2019. <p><u>Panel Meeting 16 December 2019</u> The Panel will consider a report on the Review of the Improvement Journey.</p> <p><u>Panel Meeting 13 March 2020</u> The Panel will consider a report following the Early Years Event in March 2020 which will outline feedback from the event and next steps.</p> <p>The Panel will consider the Children and Young People’s 10 Point Plan outlining the Service’s priorities – date to be determined.</p>
<p>6. Learning Outcomes and the Learning Support</p>	<p>The Panel agreed to consider –</p> <ul style="list-style-type: none"> • the Draft Learning Support Strategy early in the 2019/20 municipal year; 	<p><u>Panel Meeting on 19th July 2019</u> The Panel considered a report outlining the educational landscape in</p>

FULL PANEL DISCUSSION

ISSUE	APPROACH/AREAS OF FOCUS	OUTCOMES
<p>Strategy</p>	<ul style="list-style-type: none"> • what alternative provisions were available for children with different needs and abilities who are not able to attend mainstream education; • how isolations within secondary schools were being managed and what the planned approach was for the future; • a progress update on the educational challenges ahead, attendance and exclusions – July 2019. 	<p>Kirklees and agreed:-</p> <ol style="list-style-type: none"> 1. That further information on exclusions be considered by the Panel to include particular focus on early intervention, monitoring, the practice in Kirklees and temporary exclusions. 2. That the Panel consider a future report outlining how the new Ofsted framework for Education was working for schools and learners within Kirklees. <p>The Panel agreed as part of their work programme for 2019/20 to visit schools to talk to children, young people and staff about the Learning Support Strategy.</p> <p>The Panel will consider whether to scrutinise Secure and Sufficient School places – provisionally for the 2020/21 municipal year.</p>
<p>7. Number of children in care</p>	<p>A standing item for each meeting containing details of how many children are in care, and particularly how many are placed out of area.</p> <p>The Panel agreed to consider a more detailed report on children in care living outside Kirklees with some case studies showing the case history, challenges involved including financial demand on Kirklees and different types of placements. The report should also include the number of children who cannot be placed in Kirklees and the reasons why.</p>	<p>The Panel is satisfied that the Early Help initiatives are having an impact on the number of children in care.</p> <p>That children are placed in foster care as near to home as possible, unless they are placed with family connected persons which may be a further distance.</p> <p>The latest reports showing number of children in care will be considered by the Panel as a standing item.</p> <p><u>Panel Meeting on 19th July 2019</u></p> <p>The Panel agreed:-</p> <ol style="list-style-type: none"> 1. That the figures for data for children looked after age and gender breakdown be checked for accuracy and an update be provided at the next meeting of the Panel in August 2019. 2. That the Panel consider educational outcomes and stability for looked after children as part of the work programme for 2019/20.

FULL PANEL DISCUSSION		
ISSUE	APPROACH/AREAS OF FOCUS	OUTCOMES
		<p><u>Panel Meeting on 8th November 2019</u> The Panel agreed that officers should continue to monitor the stability of the data for looked after children less than 2 years old due to the fact that the numbers had increased over the previous 3 month period.</p>
<p>8. Future Options for Almondbury Community School</p>	<p>The Children’s Scrutiny Panel on the 7th August 2019 considered a Call-in request in respect of the decision made by Cabinet on the 16th July 2019 on Future Options for Almondbury Community School.</p> <p>The Panel agreed to consider regular updates on Almondbury Community School and the transitional arrangements for Children on roll at the school for the school year 2020/21.</p>	<p><u>Panel Meeting 7th August 2019 – Call-in Hearing</u> The Panel agreed that the Decision by Cabinet taken on the 16th July 2019 could be freed for implementation, however, recommended that Cabinet consider learning points on capacity and openness. The Panel agreed to consider regular updates on Almondbury Community School.</p> <p><u>Panel Meeting 23rd September 2019</u> The Panel considered a verbal update which highlighted the following key areas:-</p> <ul style="list-style-type: none"> - planning was in place to create the right opportunities for transition for young people currently receiving secondary education at Almondbury; - the council had made applications to the agencies requesting a variation to the admission arrangements as they wished for every child in the Almondbury school catchment area had priority to attend another local school; - the approach the council was taking to communicating with parents and would be writing directly to the families whose children were affected by the changes. <p><u>Panel Meeting 11th October 2019</u> The Panel considered an update regarding Almondbury Community School, following the Council’s decision to change the age range of the school from 1st September 2020.</p> <p>The Panel agreed:-</p> <ol style="list-style-type: none"> 1. to consider an update report to the November meeting outlining

FULL PANEL DISCUSSION

ISSUE	APPROACH/AREAS OF FOCUS	OUTCOMES
		<p>next steps and progress and which would include an outline of the transitional arrangements for children years 7 to 10.</p> <ol style="list-style-type: none"> 2. to consider a future report on the success rating of the Academy Trust that was sponsoring Newsome High School and that the report should include an update on the management arrangements for the school, which had received an Ofsted judgement of special measures. 3. to attend meetings with parents regarding the transitional arrangements for children from Almondbury Community School for the school year 2020/21. <p>The Chair of the Panel attended the Opening Evening at Almondbury Community School on 24th October 2019.</p> <p><u>Panel Meeting 8th November 2019</u> The Panel considered a verbal update on Almondbury Community School and agreed:-</p> <ol style="list-style-type: none"> 1. To continue to attend future meetings with parents regarding the transitional arrangements for children from Almondbury Community School for the school year 2020/21. 2. That the Panel consider future updates on the transition arrangements for children from Almondbury Community School for the school year 2020/21 – next report will be considered at Panel on 16th December 2019.
<p>9. Performance Information (Children’s Services)</p>	<p>The Panel will continue to monitor the performance of the Learning Early Support Service and Child Protection & Family Support.</p>	<p>The latest performance reports will be considered informally by the Panel as a standing item.</p> <p><u>Panel Meeting 13 March 2020</u> The Panel will consider information on data and performance, including feedback from the Director of Children’s Services Regional meeting to be held in January 2020.</p> <p>The Panel will consider whether to attend training on how to better</p>

FULL PANEL DISCUSSION		
ISSUE	APPROACH/AREAS OF FOCUS	OUTCOMES
		<p>understand data sets and performance information for the Children's Service.</p> <p><u>Panel Meeting 8th November 2019</u></p> <p>The Panel considered a report giving an update on repeat referrals and second time on Care Protection Plan following a request for further information from the Panel. The Panel agreed:-</p> <ol style="list-style-type: none"> 1. That the Panel consider a future report giving more detail on child referrals of domestic violence/abuse, including what impact this was having on young people and information on the origins of the referrals. 2. That the Panel consider a report outlining the results of the research undertaken by Professor Thorpe assessing how the front door has developed and is performing including responses to child protection enquiries and referrals. 3. That the Panel consider a future update outlining what support is put into place for children and young people once their Child Protection Plan finishes.
<p>Lead Member Briefings</p> <p>(Bi-monthly LM Briefings arranged with Cabinet Members for Learning and Children's; and Mel Meggs/Elaine McShane and Jo-Anne Sanders during 19/20 – no issues currently identified) – Actions from these meetings are included within the Panel's Work Programme where appropriate</p>		
<p>CAMHS Transformation Plan</p>	<p>To maintain an overview of the work of CAMHS in Kirklees, particularly to update on the autism assessment waiting list.</p> <p>The Panel agreed on the 19th July 2019 that the Lead Member would keep a watching briefing on the CAMHS Transformation Plan</p>	<p>That the Panel is satisfied that CAMHS continue to improve the service offer, and that the waiting lists for autism assessments continue to reduce.</p> <p>The Panel will consider an update report in the 2019/20 municipal year giving a summary of the CAMHS Local Transformation Plan and outlining what is available digitally when making a request for an assessment and an outline of what support and help was available for families whilst awaiting an assessment – date to be confirmed.</p>

		<p>The Panel would also like to receive a summarised version of the CAMHS Transformation Plan as soon as it is available.</p>
<p>Educational outcomes for Looked after children</p>	<p>The Panel on the 19th July 2019 agreed to consider educational outcomes for looked after children.</p> <p>The Corporate Parenting Board is looking at the issue of educational outcomes for looked after children and specifically the number of placement moves taking place which impact on the educational outcomes for looked after children.</p>	<p>The Lead Member for Children’s Scrutiny Panel will keep a watching briefing on this matter and ask the Corporate Parenting Board to report back to the Panel with their findings.</p>

Children's Scrutiny Panel

Agenda Plan 2019/20

Date of Meeting	Issues for Consideration	Officer Contact
<p>19 July 2019</p> <p>9am -10am Informal meeting</p> <p>10-12 noon Public meeting</p> <p>Meeting Room 1, HTH</p> <p>Report deadline 9.7.19</p> <p>Apologies: Mel Meggs</p>	<p style="text-align: center;">Informal items:</p> <p style="text-align: center;">Improvement Board Minutes</p> <p style="text-align: center;">Performance report</p> <p style="text-align: center;">Public Items:</p> <p style="text-align: center;">Educational Challenges ahead and progress update and action plan for attendance and exclusions</p> <p style="text-align: center;">Number of Children in Care (to include an update on future plans for CIC outside the district)</p>	<p style="text-align: center;">H Kilroy</p> <p style="text-align: center;">J Sanders/ E McShane to present</p> <p style="text-align: center;">(H Sohel/M Cameron)</p> <p style="text-align: center;">S Comb</p>
<p>23 August 2019</p> <p>10-10.30 am Informal meeting</p> <p>10.30-12.30 pm Public meeting</p> <p>Reception Room, HTH</p> <p>Apologies: Cllr R Smith, Brayford, T Bromley, Cllr Kendrick, J</p>	<p style="text-align: center;">Informal items:</p> <p style="text-align: center;">Performance report</p> <p style="text-align: center;">Public Items:</p> <p style="text-align: center;">Number of Children in Care</p> <p style="text-align: center;">Update on Exploitation Strategy and next steps</p> <p style="text-align: center;">Ofsted report (Children's Services)</p>	<p style="text-align: center;">J Sanders/E McShane to present</p> <p style="text-align: center;">S Comb</p> <p style="text-align: center;">C Jackson/O Rix</p> <p style="text-align: center;">E McShane/S Comb</p>

Date of Meeting	Issues for Consideration	Officer Contact
<p>Sanders, Cllr Pattison</p> <p>Report deadline 13.8.19</p>		
<p>23 September 2019</p> <p>10.30-11 am Informal meeting</p> <p>11am-1pm Public meeting</p> <p>Council Chamber, HTH</p> <p>Report deadline 11.9.19</p>	<p>Informal Items</p> <p>Improvement Board Minutes</p> <p>Performance report</p> <p>Public Items:</p> <p>Number of Children in Care</p> <p>SEND progress on recommendations</p> <p>New arrangements for Children’s Safeguarding and the KSCB Business Plan</p> <p>Verbal update on Almondbury Community School</p>	<p>H Kilroy</p> <p>J Sanders/E McShane to present</p> <p>Steve Comb</p> <p>Mandy Cameron/Victoria Bruce</p> <p>Sheila Lock, KSCB</p> <p>J Sanders</p>
<p>11 October 2019</p> <p>10-10.30 am Informal meeting</p> <p>10.30-12.30 pm Public meeting</p> <p>Meeting Rm 1, HTH</p> <p>Report deadline 1.10.19</p>	<p>Informal Items</p> <p>Improvement Board Minutes</p> <p>Performance report</p> <p>Public Items:</p> <p>Update on Almondbury Community School – transitional arrangements and support to children with additional needs</p>	<p>H Kilroy</p> <p>J Sanders/E McShane to present</p> <p>J Sanders/M Wilby</p>

Date of Meeting	Issues for Consideration	Officer Contact
Apols: D O'Neill		
<p>8 November 2019</p> <p>10-11 am Informal meeting</p> <p>11am-12.30 pm Public meeting</p> <p>Council Chamber, HTH</p> <p>Report deadline 25.10.19</p> <p>Apols: M Meggs</p>	<p>Informal Items</p> <p>Performance report</p> <p>Public Items:</p> <p>Update on repeat referrals and second time on CP plan action</p> <p>Update on Early Support Partnership</p> <p>Number of Children in Care</p> <p>Almondbury Community School update</p>	<p>J Sanders/E McShane to present</p> <p>Elaine McShane (S Miles writing report)</p> <p>M Wheatcroft/R Singleton</p> <p>Steve Comb</p> <p>Jo-Anne Sanders/Martin Wilby</p>
<p>16 December 2019</p> <p>10.30-11.30 am Informal meeting</p> <p>11.30 am-1pm Public meeting</p> <p>Council Chamber, HTH</p> <p>Report deadline 3.12.19</p> <p>Apols: T Bromley, M Meggs</p>	<p>Informal Items</p> <p>Improvement Board Minutes (31.10.19)</p> <p>Performance report</p> <p>Public Items:</p> <p>Number of Children in Care</p> <p>Review of Improvement Journey</p> <p>Almondbury Community School update</p>	<p>H Kilroy</p> <p>J Sanders/E McShane to present</p> <p>Julie Bragg</p> <p>E McShane/T Brailsford/J Sanders</p> <p>J Sanders/M Wilby</p>

Date of Meeting	Issues for Consideration	Officer Contact
<p>17 January 2019</p> <p>10-11 am Informal meeting</p> <p>11am-12.30 pm Public meeting</p> <p>Council Chamber, HTH</p> <p>Report deadline 7.1.20</p> <p>Apols: H Sohel, Cllr P Davies</p>	<p>Informal Items</p> <p>Improvement Board Minutes</p> <p>Performance report</p> <p>Public Items:</p> <p>Number of Children in Care</p> <p>Exploitation Strategy – follow up and findings to Dr Peels Review</p> <p>Partnership working and governance structures</p> <p>10 Point Improvement Plan plans for Social Care/SEND/Learning</p> <p>Success rating of the Academy Trust sponsoring Newsome High School (to include an update on the management arrangements for the school) <i>to be confirmed</i></p>	<p>H Kilroy</p> <p>J Sanders/E McShane to present (S Grigg to provide report)</p> <p>Julie Bragg</p> <p>M Meggs/E McShane</p> <p>J Sanders/E McShane</p> <p>J Sanders/E McShane/T Brailsford</p> <p>J Sanders/M Wilby</p>
<p>13 March 2019</p> <p>10-11 am Informal meeting</p> <p>11am-12.30 pm Public meeting</p> <p>Council Chamber, HTH</p> <p>Report deadline 3.3.20</p>	<p>Informal Items</p> <p>Improvement Board Minutes</p> <p>Performance report</p> <p>Public Items:</p> <p>Data and Performance for Children’s (to inc feedback from Regional Meeting in Jan 2020)</p> <p>Number of Children in Care</p> <p>Early Years Event (Jan 2020) – feedback and next steps</p>	<p>H Kilroy</p> <p>J Sanders/E McShane to present</p> <p>J Sanders/E McShane</p> <p>Julie Bragg</p> <p>Michelle Wheatcroft</p>

Date of Meeting	Issues for Consideration	Officer Contact
<p>17 April 2019</p> <p>10-11 am Informal meeting</p> <p>11am-12.30 pm Public meeting</p> <p>Council Chamber, HTH</p> <p>Report deadline 7.4.20</p>	<p>Informal Items</p> <p>Improvement Board Minutes</p> <p>Performance report</p> <p>Public Items:</p> <p>Number of Children in Care</p>	<p>H Kilroy</p> <p>J Sanders/E McShane to present</p> <p>Julie Bragg</p>

Future items (date to Panel to be agreed)

- Exclusions to include particular focus on early intervention, monitoring, the practice in Kirklees and temporary exclusions (H Sohel)
- Future report outlining how the new Ofsted framework for Education was working for schools and learners within Kirklees (H Sohel)
- Visits to schools to talk to children, young people and staff about the Learning Support Strategy (H Sohel)
- Children and Young People’s 10 Point Plan outlining the Service’s priorities (E McShane/J Sanders)
- Secure and Sufficient School Places (J Sanders) – 2020/21 municipal year
- Intervention work families to reduce tensions and impact in terms of repeat referrals, children coming into care and child protection plans (CSP 8.11.19) (M Wheatcroft)
- Outcomes of referrals to Family Group Conferencing (inc reasons where not been successful)(CSP 8.11.19) (M Wheatcroft)
- Child referrals of domestic violence/abuse (inc impact on young people and origins of referrals)(CSP 8.11.19) (E McShane)
- Results of Professor Thorpe’s research on development of front door (inc responses to child protection enquiries and referrals)(CSP 8.11.19) (E McShane)
- Support in place for children and young people once Child Protection Plan finishes (CSP 8.11.19) (E McShane)

Visits

- Sufficiency Placement meetings (Lead Officer – Elaine McShane to advise) – to be arranged
- Early Years Event in January 2020 and consider a formal report at a future meeting giving feedback and next steps (Lead Officer: Michelle Wheatcroft) – to be arranged
- Practice Progress meetings (Lead Officer – Elaine McShane to advise) – to be arranged

- Visits to key health partners (Lead Officer – Tom Brailsford to arrange) – visit to Northorpe Hall Single Point of Access (Locala) on 9.12.19
- Visit to Multi Agency meeting (Children’s) on 2.12.19